

Product datasheet for **TA325131S**

ECE2 (EEF1AKMT4) Rabbit Polyclonal Antibody

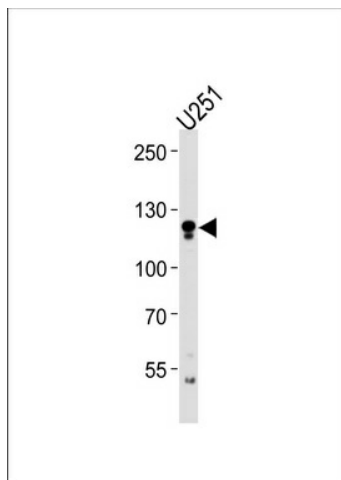
Product data:

Product Type:	Primary Antibodies
Applications:	WB
Recommended Dilution:	WB: 1:1000
Reactivity:	Human (Predicted: Mouse, Bovine)
Host:	Rabbit
Isotype:	IgG
Clonality:	Polyclonal
Immunogen:	This ECE2 antibody is generated from rabbits immunized with a KLH conjugated synthetic peptide between 551-579 amino acids from the Central region of human ECE2.
Formulation:	Purified polyclonal antibody supplied in PBS with 0.09% (W/V) sodium azide.
Concentration:	lot specific
Purification:	This antibody is purified through a protein A column, followed by peptide affinity purification.
Conjugation:	Unconjugated
Storage:	Store at -20°C as received.
Stability:	Stable for 12 months from date of receipt.
Predicted Protein Size:	99773 Da
Gene Name:	endothelin converting enzyme 2
Database Link:	NP_115707 Entrez Gene 110599564 Entrez Gene 9718 Human P0DPD6
Synonyms:	KIAA0604; MGC2408; MGC17664; MGC78487



[View online »](#)

Product images:



ECE2 Antibody (Center) (Cat. #TA325131S) western blot analysis in U251 cell line lysates (35ug/lane). This demonstrates the ECE2 antibody detected the ECE2 protein (arrow).