

## Product datasheet for **TA325130**

### APBB3 Rabbit Polyclonal Antibody

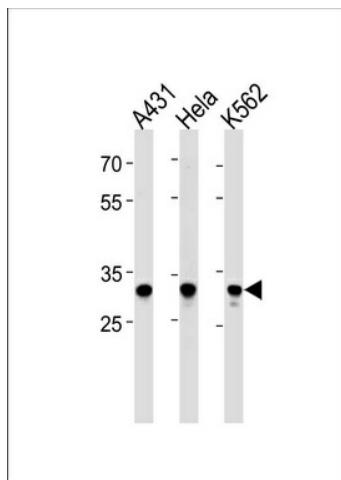
#### Product data:

Product Type:	Primary Antibodies
Applications:	WB
Recommended Dilution:	WB: 1:1000
Reactivity:	Human (Predicted: Mouse, Rat)
Host:	Rabbit
Isotype:	IgG
Clonality:	Polyclonal
Immunogen:	This APBB3 antibody is generated from rabbits immunized with a KLH conjugated synthetic peptide between 187-214 amino acids from the Central region of human APBB3.
Formulation:	Purified polyclonal antibody supplied in PBS with 0.09% (W/V) sodium azide.
Concentration:	lot specific
Purification:	This antibody is purified through a protein A column, followed by peptide affinity purification.
Conjugation:	Unconjugated
Storage:	Store at -20°C as received.
Stability:	Stable for 12 months from date of receipt.
Predicted Protein Size:	52585 Da
Gene Name:	amyloid beta precursor protein binding family B member 3
Database Link:	<a href="#">NP_006042</a> <a href="#">Entrez Gene 117026 RatEntrez Gene 225372 MouseEntrez Gene 10307 Human</a> <a href="#">O95704</a>
Synonyms:	FE65L2; SRA



[View online »](#)

## Product images:



APBB3 Antibody (Center) (Cat. #TA325130)  
western blot analysis in A431, HeLa, K562 cell line  
lysates (35ug/lane). This demonstrates the APBB3  
antibody detected the APBB3 protein (arrow).