

Product datasheet for **TA325129S**

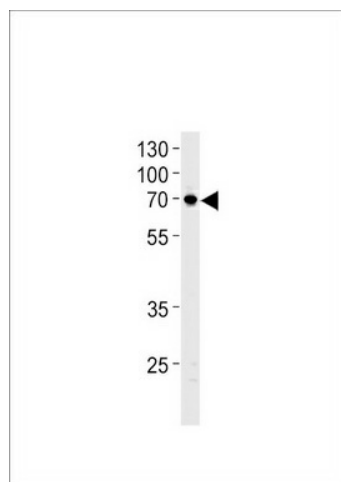
Netrin 1 (NTN1) Rabbit Polyclonal Antibody

Product data:

| | |
|-------------------------|--|
| Product Type: | Primary Antibodies |
| Applications: | WB |
| Recommended Dilution: | WB: 1:1000 |
| Reactivity: | Human (Predicted: Mouse, Chicken, Pig) |
| Host: | Rabbit |
| Isotype: | IgG |
| Clonality: | Polyclonal |
| Immunogen: | This NTN1 antibody is generated from rabbits immunized with a KLH conjugated synthetic peptide between 568-596 amino acids from the C-terminal region of human NTN1. |
| Formulation: | Purified polyclonal antibody supplied in PBS with 0.09% (W/V) sodium azide. |
| Concentration: | lot specific |
| Purification: | This antibody is purified through a protein A column, followed by peptide affinity purification. |
| Conjugation: | Unconjugated |
| Storage: | Store at -20°C as received. |
| Stability: | Stable for 12 months from date of receipt. |
| Predicted Protein Size: | 67748 Da |
| Gene Name: | netrin 1 |
| Database Link: | NP_004813 Entrez Gene 18208 Mouse Entrez Gene 9423 Human O95631 |
| Synonyms: | NTN1L |
| Protein Families: | Druggable Genome, Secreted Protein, Transmembrane |
| Protein Pathways: | Axon guidance |



[View online »](#)

Product images:

NTN1 Antibody (C-term) (Cat. #[TA325129])
western blot analysis in U87-MG cell line lysates
(35ug/lane). This demonstrates the NTN1
antibody detected the NTN1 protein (arrow).