

Product datasheet for **TA325129**

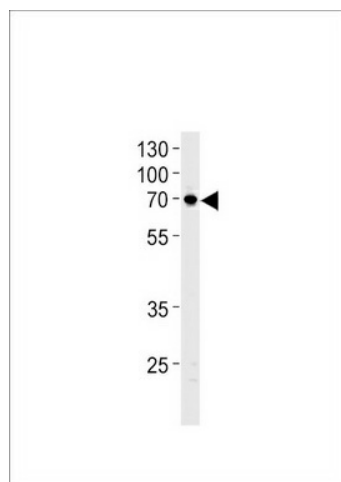
Netrin 1 (NTN1) Rabbit Polyclonal Antibody

Product data:

Product Type:	Primary Antibodies
Applications:	WB
Recommended Dilution:	WB: 1:1000
Reactivity:	Human (Predicted: Mouse, Chicken, Pig)
Host:	Rabbit
Isotype:	IgG
Clonality:	Polyclonal
Immunogen:	This NTN1 antibody is generated from rabbits immunized with a KLH conjugated synthetic peptide between 568-596 amino acids from the C-terminal region of human NTN1.
Formulation:	Purified polyclonal antibody supplied in PBS with 0.09% (W/V) sodium azide.
Concentration:	lot specific
Purification:	This antibody is purified through a protein A column, followed by peptide affinity purification.
Conjugation:	Unconjugated
Storage:	Store at -20°C as received.
Stability:	Stable for 12 months from date of receipt.
Predicted Protein Size:	67748 Da
Gene Name:	netrin 1
Database Link:	NP_004813 Entrez Gene 18208 Mouse Entrez Gene 9423 Human O95631
Synonyms:	NTN1L
Protein Families:	Druggable Genome, Secreted Protein, Transmembrane
Protein Pathways:	Axon guidance



[View online »](#)

Product images:

NTN1 Antibody (C-term) (Cat. #TA325129)
western blot analysis in U87-MG cell line lysates
(35ug/lane). This demonstrates the NTN1
antibody detected the NTN1 protein (arrow).