

Product datasheet for **TA325126S**

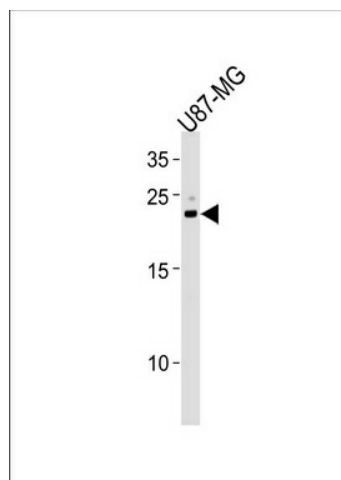
CNTF Rabbit Polyclonal Antibody

Product data:

Product Type:	Primary Antibodies
Applications:	WB
Recommended Dilution:	WB: 1:1000
Reactivity:	Human
Host:	Rabbit
Isotype:	IgG
Clonality:	Polyclonal
Immunogen:	This CNTF antibody is generated from rabbits immunized with a KLH conjugated synthetic peptide between 114-140 amino acids from the Central region of human CNTF.
Formulation:	Purified polyclonal antibody supplied in PBS with 0.09% (W/V) sodium azide.
Concentration:	lot specific
Purification:	This antibody is purified through a protein A column, followed by peptide affinity purification.
Conjugation:	Unconjugated
Storage:	Store at -20°C as received.
Stability:	Stable for 12 months from date of receipt.
Predicted Protein Size:	22931 Da
Gene Name:	ciliary neurotrophic factor
Database Link:	NP_000605 Entrez Gene 1270 Human P26441
Synonyms:	HCNTF
Protein Families:	Druggable Genome
Protein Pathways:	Cytokine-cytokine receptor interaction, Jak-STAT signaling pathway



[View online »](#)

Product images:

CNTF Antibody (Center) (Cat. #[TA325126])
western blot analysis in U87-MG cell line lysates
(35ug/lane). This demonstrates the CNTF antibody
detected the CNTF protein (arrow).