

Product datasheet for **TA325124S**

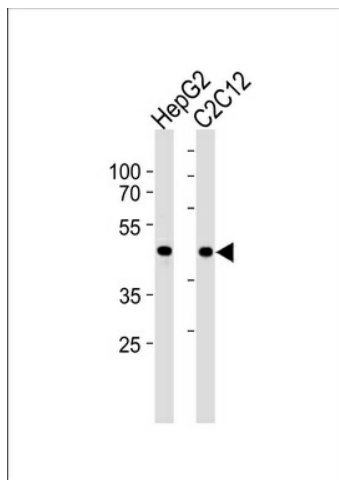
SMAD3 Rabbit Polyclonal Antibody

Product data:

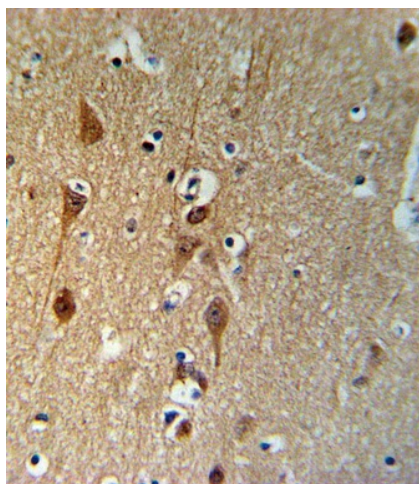
Product Type:	Primary Antibodies
Applications:	FC, IF, IHC, WB
Recommended Dilution:	WB: 1:1000, IHC: 1:10~50, IF: 1:10~50, FC: 1:10~50
Reactivity:	Human, Mouse (Predicted: Rat, Chicken, Pig)
Host:	Rabbit
Isotype:	IgG
Clonality:	Polyclonal
Immunogen:	This SMAD3 antibody is generated from rabbits immunized with a KLH conjugated synthetic peptide between 186-215 amino acids from human SMAD3.
Formulation:	Purified polyclonal antibody supplied in PBS with 0.09% (W/V) sodium azide.
Concentration:	lot specific
Purification:	This antibody is purified through a protein A column, followed by peptide affinity purification.
Conjugation:	Unconjugated
Storage:	Store at -20°C as received.
Stability:	Stable for 12 months from date of receipt.
Predicted Protein Size:	48081 Da
Gene Name:	SMAD family member 3
Database Link:	NP_005893 Entrez Gene 17127 Mouse Entrez Gene 25631 Rat Entrez Gene 4088 Human P84022
Synonyms:	HSPC193; HsT17436; JV15-2; LDS1C; LDS3; MADH3
Protein Families:	Cancer stem cells, Druggable Genome, Embryonic stem cells, ES Cell Differentiation/IPS, Stem cell relevant signaling - JAK/STAT signaling pathway, Stem cell relevant signaling - TGFb/BMP signaling pathway, Transcription Factors
Protein Pathways:	Adherens junction, Cell cycle, Chronic myeloid leukemia, Colorectal cancer, Pancreatic cancer, Pathways in cancer, TGF-beta signaling pathway, Wnt signaling pathway



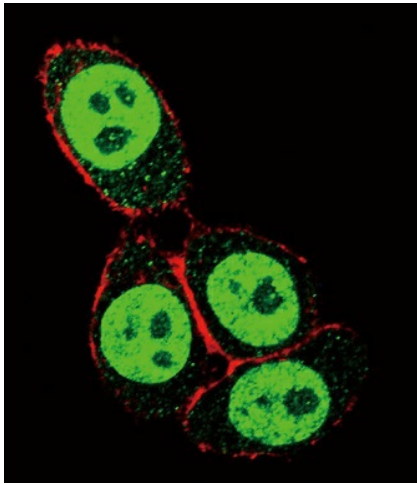
[View online »](#)

Product images:

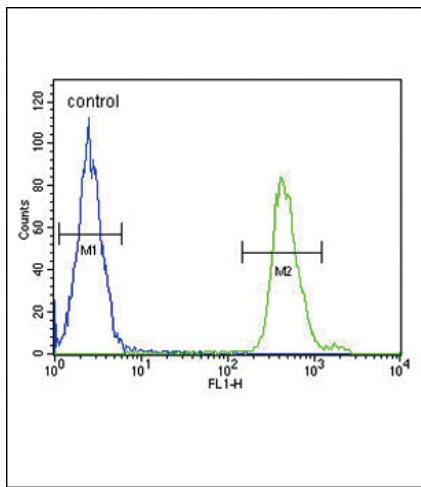
SMAD3 Antibody (S208) (Cat. #[TA325124]) western blot analysis in HepG2 and mouse C2C12 cell line lysates (35ug/lane). This demonstrates the SMAD3 antibody detected the SMAD3 protein (arrow).



SMAD3-S208 Antibody (cat. #[TA325124]) IHC analysis in formalin fixed and paraffin embedded brain tissue followed by peroxidase conjugation of the secondary antibody and DAB staining. This data demonstrates the use of the SMAD3-S208 Antibody for immunohistochemistry. Clinical relevance has not been evaluated.



Confocal immunofluorescent analysis of SMAD3-S208 Antibody (Cat#[TA325124]) with HeLa cell followed by Alexa Fluor 488-conjugated goat anti-rabbit IgG (green). Actin filaments have been labeled with Alexa Fluor 555 phalloidin (red).



SMAD3-S208 Antibody (Cat. #[TA325124]) flow cytometric analysis of MDA-MB231 cells (right histogram) compared to a negative control cell (left histogram). FITC-conjugated goat-anti-rabbit secondary antibodies were used for the analysis.