

Product datasheet for **TA325122**

LXR alpha (NR1H3) Rabbit Polyclonal Antibody

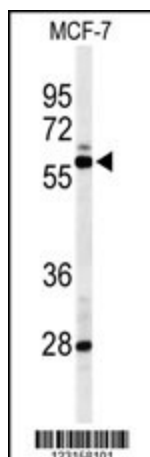
Product data:

Product Type:	Primary Antibodies
Applications:	FC, IF, WB
Recommended Dilution:	IF: 1:10~50, WB: 1:1000, FC: 1:10~50
Reactivity:	Human
Host:	Rabbit
Isotype:	IgG
Clonality:	Polyclonal
Immunogen:	This NR1H3 antibody is generated from rabbits immunized with a KLH conjugated synthetic peptide between 226-253 amino acids from the Central region of human NR1H3.
Formulation:	Purified polyclonal antibody supplied in PBS with 0.09% (W/V) sodium azide.
Concentration:	lot specific
Purification:	This antibody is purified through a protein A column, followed by peptide affinity purification.
Conjugation:	Unconjugated
Storage:	Store at -20°C as received.
Stability:	Stable for 12 months from date of receipt.
Predicted Protein Size:	50396 Da
Gene Name:	nuclear receptor subfamily 1 group H member 3
Database Link:	NP_005684 Entrez Gene 10062 Human Q13133
Synonyms:	LXR-a; LXRA; RLD-1
Protein Families:	Druggable Genome, Nuclear Hormone Receptor, Transcription Factors
Protein Pathways:	PPAR signaling pathway

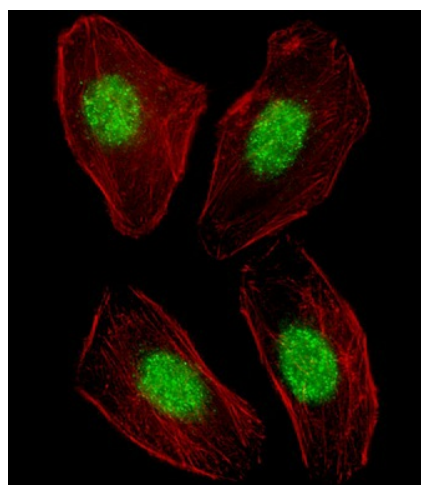


[View online »](#)

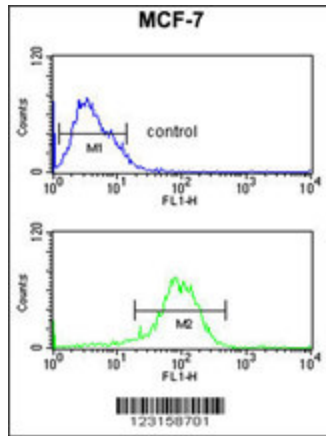
Product images:



Western blot analysis of NR1H3 Antibody (Center) (Cat. #TA325122) in MCF-7 cell line lysates (35ug/lane). NR1H3 (arrow) was detected using the purified Pab.



IF image of U251 cell stained with NR1H3 Antibody (Center) (Cat#TA325122).U251 cells were incubated with NR1H3 primary antibody (1:25, 1 h at 37°C). For secondary antibody, Alexa Fluor® 488 conjugated donkey anti-rabbit antibody (green) was used (1:400).Cytoplasmic actin was counterstained with Alexa Fluor® 555 (red) conjugated Phalloidin (7 units/ml).NR1H3 immunoreactivity is localized to Nucleus significantly.



NR1H3 Antibody (Center) (Cat. #TA325122) flow cytometric analysis of MCF-7 cells (bottom histogram) compared to a negative control cell (top histogram). FITC-conjugated goat-anti-rabbit secondary antibodies were used for the analysis.