

Product datasheet for **TA325121**

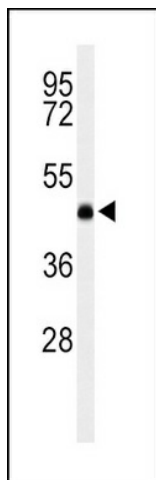
LCAT Rabbit Polyclonal Antibody

Product data:

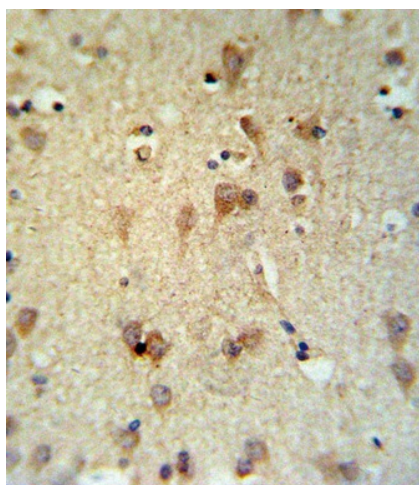
Product Type:	Primary Antibodies
Applications:	FC, IF, IHC, WB
Recommended Dilution:	WB: 1:1000, IHC: 1:10~50, IF: 1:10~50, FC: 1:10~50
Reactivity:	Human
Host:	Rabbit
Isotype:	IgG
Clonality:	Polyclonal
Immunogen:	This LCAT antibody is generated from rabbits immunized with a KLH conjugated synthetic peptide between 285-313 amino acids from the Central region of human LCAT.
Formulation:	Purified polyclonal antibody supplied in PBS with 0.09% (W/V) sodium azide.
Concentration:	lot specific
Purification:	This antibody is purified through a protein A column, followed by peptide affinity purification.
Conjugation:	Unconjugated
Storage:	Store at -20°C as received.
Stability:	Stable for 12 months from date of receipt.
Predicted Protein Size:	49578 Da
Gene Name:	lecithin-cholesterol acyltransferase
Database Link:	NP_000220 Entrez Gene 3931 Human P04180
Synonyms:	lecithin-cholesterol acyltransferase
Protein Families:	Druggable Genome, Transmembrane
Protein Pathways:	Glycerophospholipid metabolism



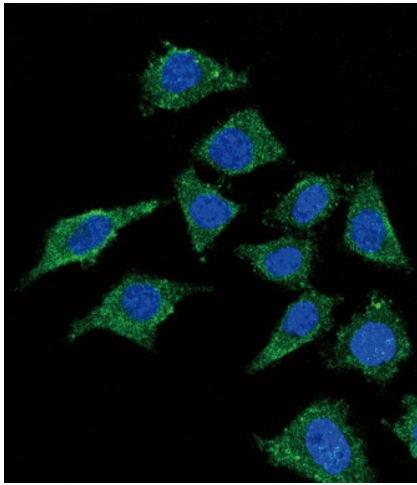
[View online »](#)

Product images:

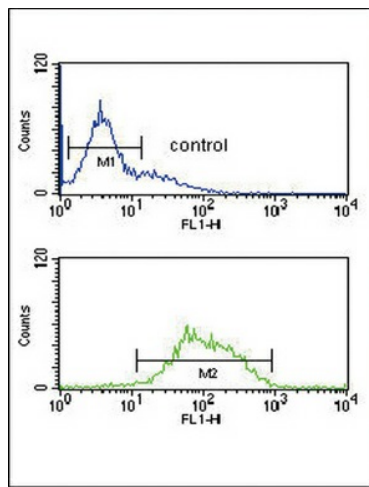
Western blot analysis of LCAT Antibody (Center) (Cat. #TA325121) in K562 cell line lysates (35ug/lane). LCAT (arrow) was detected using the purified Pab.



LCAT Antibody (Center) (Cat. #TA325121) IHC analysis in formalin fixed and paraffin embedded brain tissue followed by peroxidase conjugation of the secondary antibody and DAB staining. This data demonstrates the use of the LCAT Antibody (Center) for immunohistochemistry. Clinical relevance has not been evaluated.



Confocal immunofluorescent analysis of LCAT Antibody (Center) (Cat. #TA325121) with 293 cell followed by Alexa Fluor 488-conjugated goat anti-rabbit IgG (green). DAPI was used to stain the cell nuclear (blue).



LCAT Antibody (Center) (Cat. #TA325121) flow cytometric analysis of K562 cells (bottom histogram) compared to a negative control cell (top histogram). FITC-conjugated goat-anti-rabbit secondary antibodies were used for the analysis.