

Product datasheet for **TA325120S**

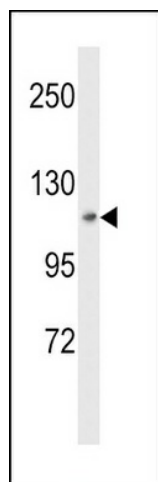
MAP4K3 Rabbit Polyclonal Antibody

Product data:

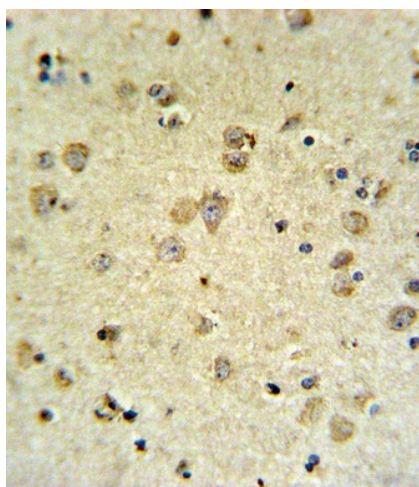
| | |
|-------------------------|--|
| Product Type: | Primary Antibodies |
| Applications: | FC, IHC, WB |
| Recommended Dilution: | WB: 1:1000, IHC: 1:10~50, FC: 1:10~50 |
| Reactivity: | Human |
| Host: | Rabbit |
| Isotype: | IgG |
| Clonality: | Polyclonal |
| Immunogen: | This MAP4K3 antibody is generated from rabbits immunized with a recombinant protein of human MAP4K3. |
| Formulation: | Purified polyclonal antibody supplied in PBS with 0.09% (W/V) sodium azide. |
| Concentration: | lot specific |
| Purification: | This antibody is purified through a protein A column, followed by peptide affinity purification. |
| Conjugation: | Unconjugated |
| Storage: | Store at -20°C as received. |
| Stability: | Stable for 12 months from date of receipt. |
| Predicted Protein Size: | 101316 Da |
| Gene Name: | mitogen-activated protein kinase kinase kinase kinase 3 |
| Database Link: | NP_003609 Entrez Gene 8491 Human Q8IVH8 |
| Synonyms: | GLK; MAPKKKK3; MEKKK 3; MEKKK3; RAB8IPL1 |
| Protein Families: | Druggable Genome, Protein Kinase |
| Protein Pathways: | MAPK signaling pathway |



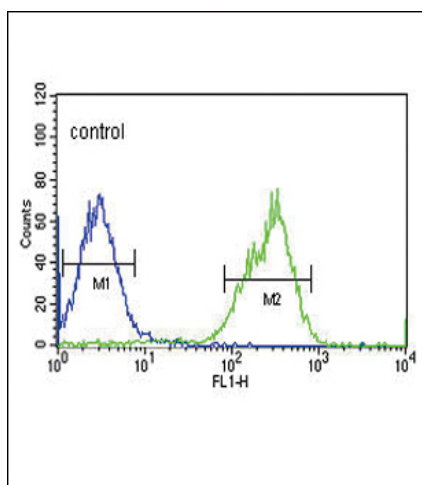
[View online »](#)

Product images:


Western blot analysis of MAP4K3 Antibody (Cat. # [TA325120]) in HepG2 cell line lysates (35ug/lane). MAP4K3 (arrow) was detected using the purified Pab.



MAP4K3 Antibody (Cat. # [TA325120]) IHC analysis in formalin fixed and paraffin embedded brain tissue followed by peroxidase conjugation of the secondary antibody and DAB staining. This data demonstrates the use of the MAP4K3 Antibody for immunohistochemistry. Clinical relevance has not been evaluated.



MAP4K3 Antibody (Cat. #[TA325120]) flow cytometric analysis of HepG2 cells (right histogram) compared to a negative control cell (left histogram). FITC-conjugated goat-anti-rabbit secondary antibodies were used for the analysis.