

## Product datasheet for **TA325119S**

### FOXP1 Rabbit Polyclonal Antibody

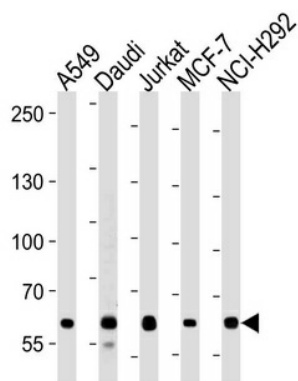
#### Product data:

Product Type:	Primary Antibodies
Applications:	FC, IHC, WB
Recommended Dilution:	WB: 1:1000, IHC: 1:50~100, FC: 1:10~50
Reactivity:	Human (Predicted: Mouse, Rat, Bovine)
Host:	Rabbit
Isotype:	IgG
Clonality:	Polyclonal
Immunogen:	This FOXP1 antibody is generated from rabbits immunized with a KLH conjugated synthetic peptide between 650-677 amino acids from the C-terminal region of human FOXP1.
Formulation:	Purified polyclonal antibody supplied in PBS with 0.09% (W/V) sodium azide.
Concentration:	lot specific
Purification:	This antibody is purified through a protein A column, followed by peptide affinity purification.
Conjugation:	Unconjugated
Storage:	Store at -20°C as received.
Stability:	Stable for 12 months from date of receipt.
Predicted Protein Size:	75317 Da
Gene Name:	forkhead box P1
Database Link:	<a href="#">NP_116071</a> <a href="#">Entrez Gene 108655 Mouse</a> <a href="#">Entrez Gene 297480 Rat</a> <a href="#">Entrez Gene 27086 Human</a> <a href="#">Q9H334</a>
Synonyms:	12CC4; hFKH1B; HSPC215; MFH; QRF1
Protein Families:	Transcription Factors

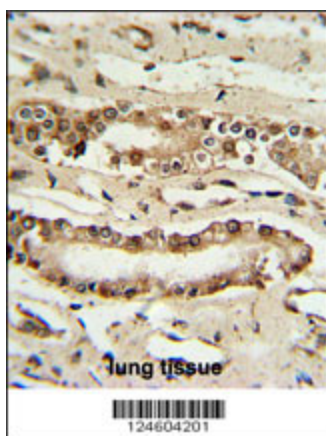


[View online »](#)

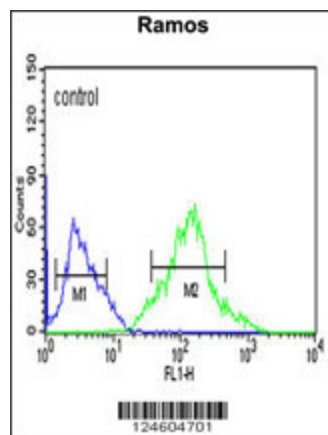
## Product images:



FOXP1 Antibody (C-term) (Cat. #[TA325119]) western blot analysis in A549, Daudi, Jurkat, MCF-7, NCI-H292 cell line lysates (35ug/lane). This demonstrates the FOXP1 antibody detected the FOXP1 protein (arrow).



FOXP1 Antibody (C-term) (Cat. #[TA325119]) IHC analysis in formalin fixed and paraffin embedded lung tissue followed by peroxidase conjugation of the secondary antibody and DAB staining. This data demonstrates the use of the FOXP1 Antibody (C-term) for immunohistochemistry. Clinical relevance has not been evaluated.



FOXP1 Antibody (C-term) (Cat. #[TA325119]) flow cytometric analysis of Ramos cells (right histogram) compared to a negative control cell (left histogram). FITC-conjugated goat-anti-rabbit secondary antibodies were used for the analysis.