

Product datasheet for **TA325117**

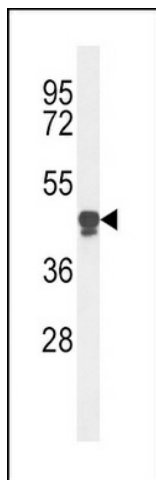
PAFAH (PLA2G7) Rabbit Polyclonal Antibody

Product data:

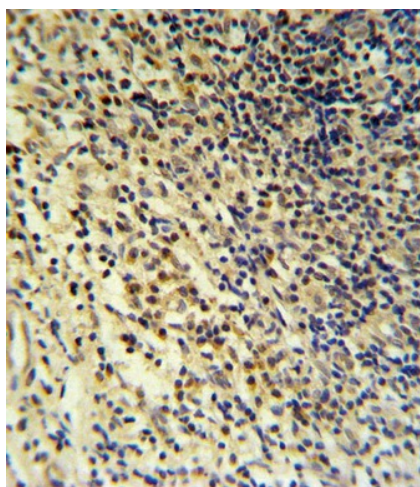
| | |
|-------------------------|---|
| Product Type: | Primary Antibodies |
| Applications: | FC, IHC, WB |
| Recommended Dilution: | WB: 1:1000, IHC: 1:10~50, FC: 1:10~50 |
| Reactivity: | Human |
| Host: | Rabbit |
| Isotype: | IgG |
| Clonality: | Polyclonal |
| Immunogen: | This PLA2G7 antibody is generated from rabbits immunized with a KLH conjugated synthetic peptide between 200-228 amino acids from the Central region of human PLA2G7. |
| Formulation: | Purified polyclonal antibody supplied in PBS with 0.09% (W/V) sodium azide. |
| Concentration: | lot specific |
| Purification: | This antibody is purified through a protein A column, followed by peptide affinity purification. |
| Conjugation: | Unconjugated |
| Storage: | Store at -20°C as received. |
| Stability: | Stable for 12 months from date of receipt. |
| Predicted Protein Size: | 50077 Da |
| Gene Name: | phospholipase A2 group VII |
| Database Link: | NP_005075 Entrez Gene 7941 Human Q13093 |
| Synonyms: | LDL-PLA2; LP-PLA2; PAFAD; PAFAH |
| Protein Families: | Druggable Genome, Secreted Protein |
| Protein Pathways: | Ether lipid metabolism, Metabolic pathways |



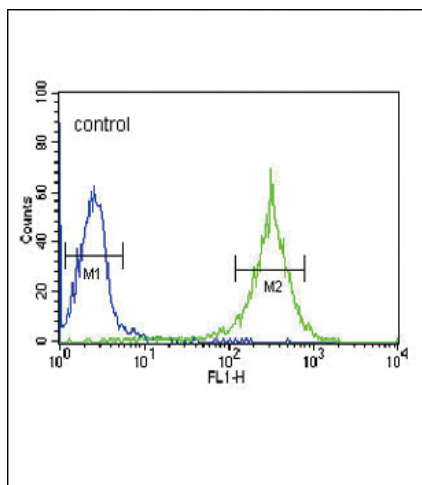
[View online »](#)

Product images:

Western blot analysis of PLA2G7 Antibody (Center) (Cat. #TA325117) in HL-60 cell line lysates (35ug/lane). PLA2G7 (arrow) was detected using the purified Pab.



PLA2G7 Antibody (Center) (Cat. #TA325117) IHC analysis in formalin fixed and paraffin embedded tonsil followed by peroxidase conjugation of the secondary antibody and DAB staining. This data demonstrates the use of the PLA2G7 Antibody (Center) for immunohistochemistry. Clinical relevance has not been evaluated.



PLA2G7 Antibody (Center) (Cat. #TA325117) flow cytometric analysis of HL-60 cells (right histogram) compared to a negative control cell (left histogram). FITC-conjugated goat-anti-rabbit secondary antibodies were used for the analysis.