

Product datasheet for **TA325116S**

FOXG1 Rabbit Polyclonal Antibody

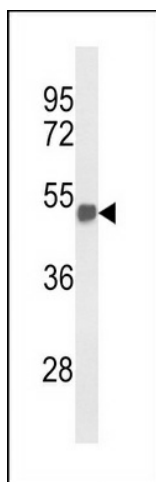
Product data:

Product Type:	Primary Antibodies
Applications:	FC, IF, WB
Recommended Dilution:	WB: 1:1000, FC: 1:10~50, IF: 1:10~50
Reactivity:	Human, Mouse (Predicted: Rat, Chicken, Drosophila, Xenopus)
Host:	Rabbit
Isotype:	IgG
Clonality:	Polyclonal
Immunogen:	This FOXG1 antibody is generated from rabbits immunized with a KLH conjugated synthetic peptide between 225-252 amino acids from the Central region of human FOXG1.
Formulation:	Purified polyclonal antibody supplied in PBS with 0.09% (W/V) sodium azide.
Concentration:	lot specific
Purification:	This antibody is purified through a protein A column, followed by peptide affinity purification.
Conjugation:	Unconjugated
Storage:	Store at -20°C as received.
Stability:	Stable for 12 months from date of receipt.
Predicted Protein Size:	52352 Da
Gene Name:	forkhead box G1
Database Link:	NP_005240 Entrez Gene 15228 Mouse Entrez Gene 24370 Rat Entrez Gene 2290 Human P55316
Synonyms:	BF1; BF2; FHL3; FK2; FKHL1; FKHL2; FKHL3; FKHL4; FOXG1A; FOXG1B; FOXG1C; HBF-1; HBF-2; HBF-3
Protein Families:	Druggable Genome, Transcription Factors

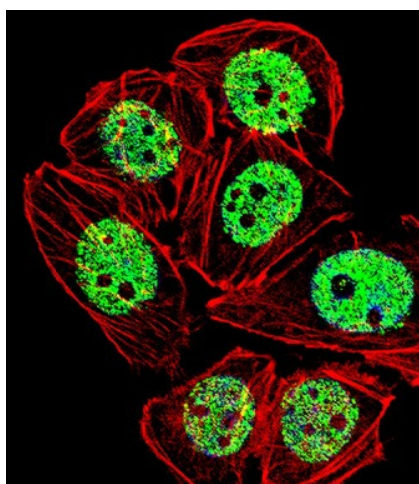


[View online »](#)

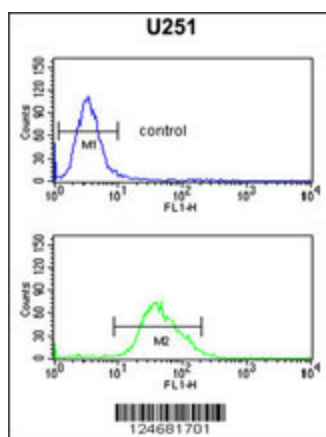
Product images:



Western blot analysis of FOXG1 Antibody (Center) (Cat. #TA325116) in mouse brain tissue lysates (35ug/lane). FOXG1 (arrow) was detected using the purified Pab.



IF image of A549 cell stained with FOXG1 Antibody (Center) (Cat#[TA325116]).A549 cells were incubated with FOXG1 primary antibody (1:25, 1 h at 37°C). For secondary antibody, Alexa Fluor® 488 conjugated donkey anti-rabbit antibody (green) was used (1:400).Cytoplasmic actin was counterstained with Alexa Fluor® 555 (red) conjugated Phalloidin (7 units/ml). Nuclei were counterstained with DAPI (blue). FOXG1 immunoreactivity is localized to Nucleus significantly.



FOXG1 Antibody (Center) (Cat. #[TA325116]) flow cytometric analysis of U251 cells (bottom histogram) compared to a negative control cell (top histogram). FITC-conjugated goat-anti-rabbit secondary antibodies were used for the analysis.