

Product datasheet for **TA325115S**

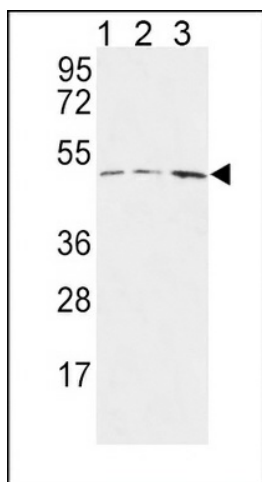
HAPLN1 Rabbit Polyclonal Antibody

Product data:

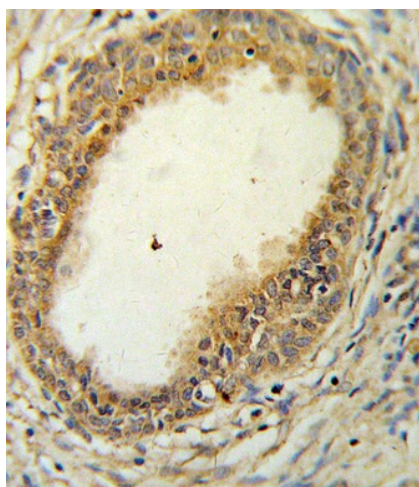
Product Type:	Primary Antibodies
Applications:	FC, IHC, WB
Recommended Dilution:	WB: 1:1000, IHC: 1:10~50, FC: 1:10~50
Reactivity:	Human
Host:	Rabbit
Isotype:	IgG
Clonality:	Polyclonal
Immunogen:	This HAPLN1 antibody is generated from rabbits immunized with a KLH conjugated synthetic peptide between 10-38 amino acids from the N-terminal region of human HAPLN1.
Formulation:	Purified polyclonal antibody supplied in PBS with 0.09% (W/V) sodium azide.
Concentration:	lot specific
Purification:	This antibody is purified through a protein A column, followed by peptide affinity purification.
Conjugation:	Unconjugated
Storage:	Store at -20°C as received.
Stability:	Stable for 12 months from date of receipt.
Predicted Protein Size:	40166 Da
Gene Name:	hyaluronan and proteoglycan link protein 1
Database Link:	NP_001875 Entrez Gene 1404 Human P10915
Synonyms:	CRT1; CRTL1

[View online »](#)

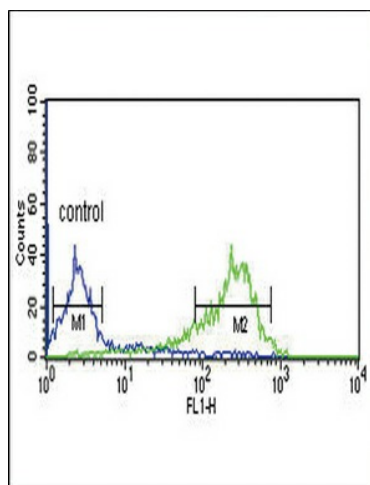
Product images:



HAPLN1 Antibody (N-term) (Cat. #TA325115S) western blot analysis in MCF-7 (lane 1), Jurkat (lane 2), HepG2 (lane 3) cell line lysates (35ug/lane). This demonstrates the HAPLN1 antibody detected the HAPLN1 protein (arrow).



HAPLN1 Antibody (N-term) (Cat. #TA325115S) IHC analysis in formalin fixed and paraffin embedded prostate carcinoma followed by peroxidase conjugation of the secondary antibody and DAB staining. This data demonstrates the use of the HAPLN1 Antibody (N-term) for immunohistochemistry. Clinical relevance has not been evaluated.



HAPLN1 Antibody (N-term) (Cat. #TA325115S) flow cytometric analysis of MCF-7 cells (right histogram) compared to a negative control cell (left histogram). FITC-conjugated goat-anti-rabbit secondary antibodies were used for the analysis.