

Product datasheet for **TA325114**

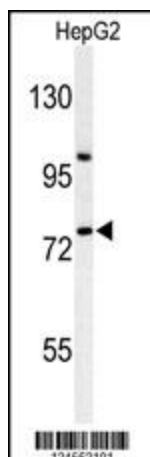
ZNF202 Rabbit Polyclonal Antibody

Product data:

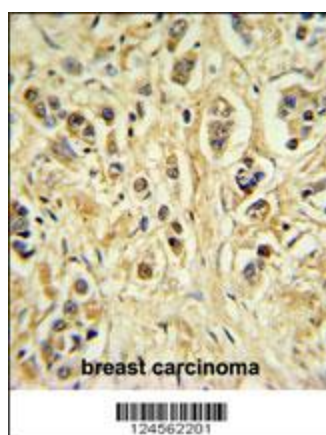
Product Type:	Primary Antibodies
Applications:	FC, IF, IHC, WB
Recommended Dilution:	WB: 1:1000, IHC: 1:50~100, FC: 1:10~50, IF: 1:10~50
Reactivity:	Human
Host:	Rabbit
Isotype:	IgG
Clonality:	Polyclonal
Immunogen:	This ZNF202 antibody is generated from rabbits immunized with a KLH conjugated synthetic peptide between 342-370 amino acids from the Central region of human ZNF202.
Formulation:	Purified polyclonal antibody supplied in PBS with 0.09% (W/V) sodium azide.
Concentration:	lot specific
Purification:	This antibody is purified through a protein A column, followed by peptide affinity purification.
Conjugation:	Unconjugated
Storage:	Store at -20°C as received.
Stability:	Stable for 12 months from date of receipt.
Predicted Protein Size:	74720 Da
Gene Name:	zinc finger protein 202
Database Link:	NP_003446 Entrez Gene 7753 Human O95125
Synonyms:	ZKSCAN10; ZSCAN42
Protein Families:	Transcription Factors



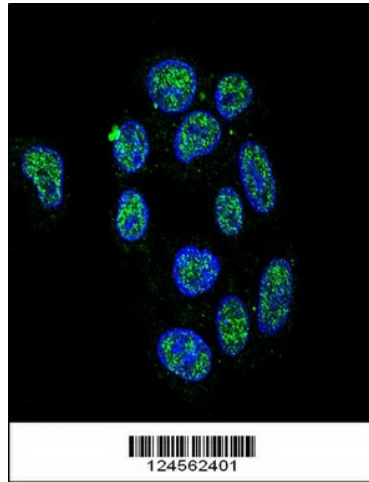
[View online »](#)

Product images:

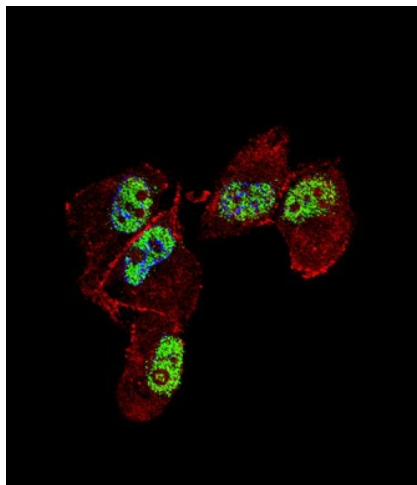
Western blot analysis of ZNF202 Antibody (Center) (Cat. #TA325114) in HepG2 cell line lysates (35ug/lane). ZNF202 (arrow) was detected using the purified Pab.



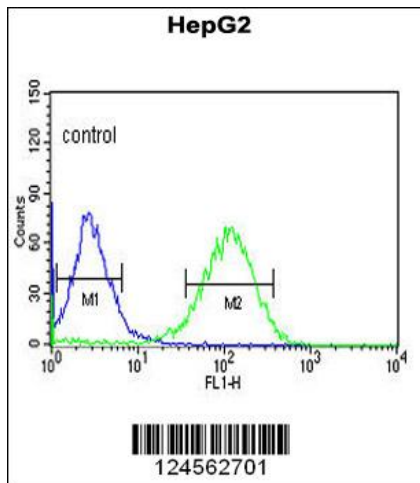
ZNF202 Antibody (Center) (Cat. #TA325114) IHC analysis in formalin fixed and paraffin embedded breast carcinoma followed by peroxidase conjugation of the secondary antibody and DAB staining. This data demonstrates the use of the ZNF202 Antibody (Center) for immunohistochemistry. Clinical relevance has not been evaluated.



Confocal immunofluorescent analysis of ZNF202 Antibody (Center) (Cat#TA325114) with HepG2 cell followed by Alexa Fluor 488-conjugated goat anti-rabbit IgG (green). DAPI was used to stain the cell nuclear (blue).



IF image of MDA-MB231 cell stained with ZNF202 Antibody (Center) (Cat#TA325114). MDA-MB231 cells were incubated with ZNF202 primary antibody (1:25, 1 h at 37°C). For secondary antibody, Alexa Fluor® 488 conjugated donkey anti-rabbit antibody (green) was used (1:400). Cytoplasmic actin was counterstained with Alexa Fluor® 555 (red) conjugated Phalloidin (7 units/ml). Nuclei were counterstained with DAPI (blue). ZNF202 immunoreactivity is localized to nucleus significantly.



ZNF202 Antibody (Center) (Cat. #TA325114) flow cytometric analysis of HepG2 cells (right histogram) compared to a negative control cell (left histogram). FITC-conjugated goat-anti-rabbit secondary antibodies were used for the analysis.