

## Product datasheet for TA325112S

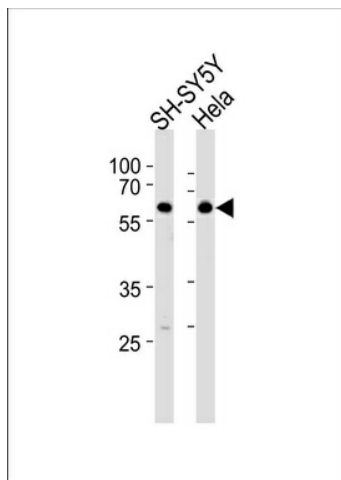
### HDAC2 Rabbit Polyclonal Antibody

#### Product data:

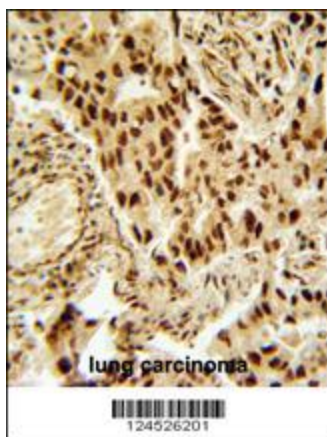
Product Type:	Primary Antibodies
Applications:	FC, IF, IHC, WB
Recommended Dilution:	WB: 1:1000, IHC: 1:50~100, FC: 1:10~50, IF: 1:10~50
Reactivity:	Human (Predicted: Mouse, Chicken)
Host:	Rabbit
Isotype:	IgG
Clonality:	Polyclonal
Immunogen:	This HDAC2 antibody is generated from rabbits immunized with a KLH conjugated synthetic peptide between 410-439 amino acids from the Central region of human HDAC2.
Formulation:	Purified polyclonal antibody supplied in PBS with 0.09% (W/V) sodium azide.
Concentration:	lot specific
Purification:	This antibody is purified through a protein A column, followed by peptide affinity purification.
Conjugation:	Unconjugated
Storage:	Store at -20°C as received.
Stability:	Stable for 12 months from date of receipt.
Predicted Protein Size:	55364 Da
Gene Name:	histone deacetylase 2
Database Link:	<a href="#">NP_001518</a> <a href="#">Entrez Gene 15182 Mouse</a> <a href="#">Entrez Gene 3066 Human</a> <a href="#">Q92769</a>
Synonyms:	HD2; RPD3; YAF1
Protein Families:	Druggable Genome, Stem cell - Pluripotency, Transcription Factors
Protein Pathways:	Cell cycle, Chronic myeloid leukemia, Huntington's disease, Notch signaling pathway, Pathways in cancer


[View online »](#)

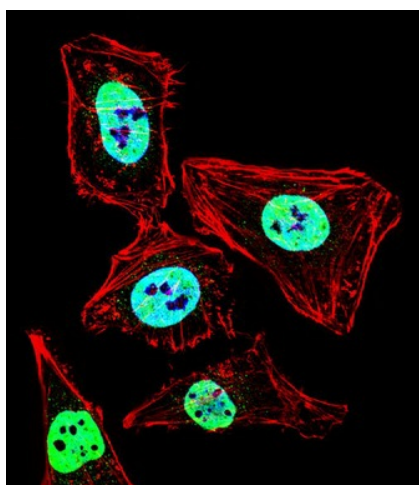
## Product images:



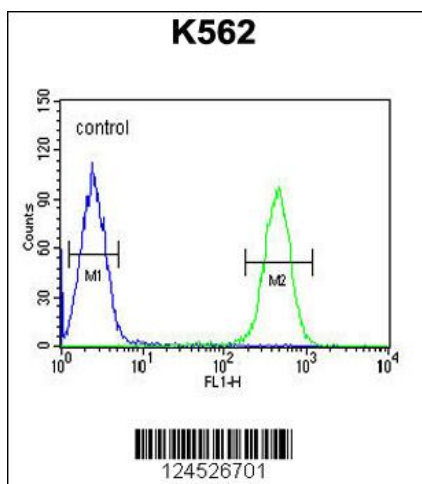
HDAC2 Antibody (Center) (Cat. #TA325112]) western blot analysis in SH-SY5Y cell line lysates (35ug/lane). This demonstrates the HDAC2 antibody detected the HDAC2 protein (arrow).



HDAC2 Antibody (Center) (Cat. #TA325112]) immunohistochemistry analysis in formalin fixed and paraffin embedded human lung carcinoma followed by peroxidase conjugation of the secondary antibody and DAB staining. This data demonstrates the use of the HDAC2 Antibody (Center) for immunohistochemistry. Clinical relevance has not been evaluated.



IF image of HeLa cell stained with HDAC2 Antibody (Center) (Cat#[TA325112]). HeLa cells were incubated with HDAC2 primary antibody (1:25, 1 h at 37°C). For secondary antibody, Alexa Fluor® 488 conjugated donkey anti-rabbit antibody (green) was used (1:400). Cytoplasmic actin was counterstained with Alexa Fluor® 555 (red) conjugated Phalloidin (7 units/ml). Nuclei were counterstained with DAPI (blue). HDAC2 immunoreactivity is localized to Nucleus significantly.



HDAC2 Antibody (Center) (Cat. #TA325112) flow cytometric analysis of K562 cells (right histogram) compared to a negative control cell (left histogram). FITC-conjugated goat-anti-rabbit secondary antibodies were used for the analysis.