

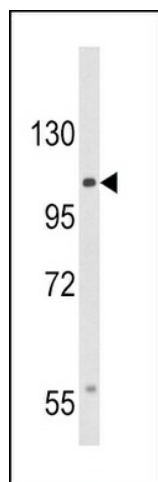
Product datasheet for TA325110

CACNA2D3 Rabbit Polyclonal Antibody

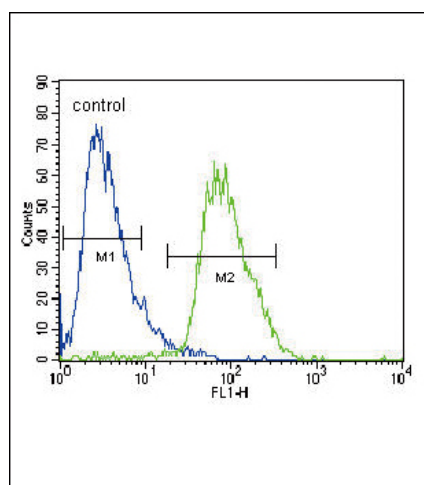
Product data:

Product Type:	Primary Antibodies
Applications:	FC, WB
Recommended Dilution:	WB: 1:1000, FC: 1:10~50
Reactivity:	Human (Predicted: Mouse, Rat)
Host:	Rabbit
Isotype:	IgG
Clonality:	Polyclonal
Immunogen:	This CACNA2D3 antibody is generated from rabbits immunized with a KLH conjugated synthetic peptide between 1026-1053 amino acids from the C-terminal region of human CACNA2D3.
Formulation:	Purified polyclonal antibody supplied in PBS with 0.09% (W/V) sodium azide.
Concentration:	lot specific
Purification:	This antibody is purified through a protein A column, followed by peptide affinity purification.
Conjugation:	Unconjugated
Storage:	Store at -20°C as received.
Stability:	Stable for 12 months from date of receipt.
Predicted Protein Size:	123011 Da
Gene Name:	calcium voltage-gated channel auxiliary subunit alpha2delta 3
Database Link:	NP_060868 Entrez Gene 12294 Mouse Entrez Gene 306243 Rat Entrez Gene 55799 Human Q8IZS8
Synonyms:	HSA272268
Protein Families:	Druggable Genome, Ion Channels: Other
Protein Pathways:	Arrhythmogenic right ventricular cardiomyopathy (ARVC), Cardiac muscle contraction, Dilated cardiomyopathy, Hypertrophic cardiomyopathy (HCM), MAPK signaling pathway


[View online »](#)

Product images:


Western blot analysis of CACNA2D3 Antibody (C-term) (Cat. #TA325110) in HepG2 cell line lysates (35ug/lane). CACNA2D3 (arrow) was detected using the purified Pab.



CACNA2D3 Antibody (C-term) (Cat. #TA325110) flow cytometric analysis of HepG2 cells (right histogram) compared to a negative control cell (left histogram). FITC-conjugated goat-anti-rabbit secondary antibodies were used for the analysis.