

## Product datasheet for **TA325109S**

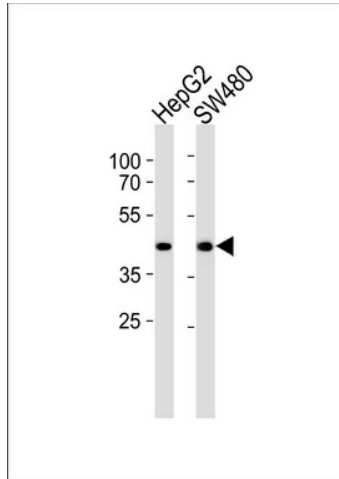
### ADH7 Rabbit Polyclonal Antibody

#### Product data:

Product Type:	Primary Antibodies
Applications:	FC, IF, IHC, WB
Recommended Dilution:	WB: 1:1000, IHC: 1:50~100, FC: 1:10~50, IF: 1:10~50
Reactivity:	Human
Host:	Rabbit
Isotype:	IgG
Clonality:	Polyclonal
Immunogen:	This ADH7 antibody is generated from rabbits immunized with a KLH conjugated synthetic peptide between 318-346 amino acids from the C-terminal region of human ADH7.
Formulation:	Purified polyclonal antibody supplied in PBS with 0.09% (W/V) sodium azide.
Concentration:	lot specific
Purification:	This antibody is purified through a protein A column, followed by peptide affinity purification.
Conjugation:	Unconjugated
Storage:	Store at -20°C as received.
Stability:	Stable for 12 months from date of receipt.
Predicted Protein Size:	41481 Da
Gene Name:	alcohol dehydrogenase 7 (class IV), mu or sigma polypeptide
Database Link:	<a href="#">NP_000664</a> <a href="#">Entrez Gene 131 Human</a> <a href="#">P40394</a>
Synonyms:	ADH4
Protein Families:	Druggable Genome
Protein Pathways:	Drug metabolism - cytochrome P450, Fatty acid metabolism, Glycolysis / Gluconeogenesis, Metabolic pathways, Metabolism of xenobiotics by cytochrome P450, Retinol metabolism, Tyrosine metabolism



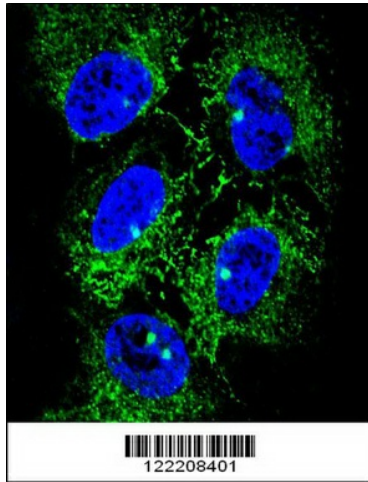
[View online »](#)

**Product images:**

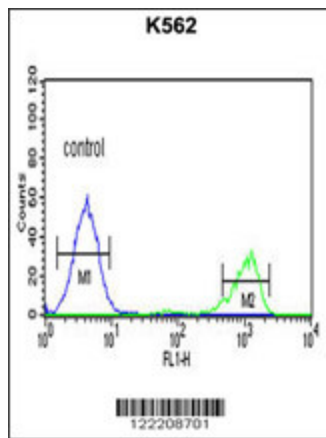
Western blot analysis of lysates from HepG2, SW480 cell line (from left to right), using ADH7 Antibody (C-Term) (Cat. #[TA325109]). [TA325109] was diluted at 1:1000 at each lane. A goat anti-rabbit IgG H&L (HRP) at 1:5000 dilution was used as the secondary antibody. Lysates at 35ug per lane.



ADH7 Antibody (C-Term) (Cat. #[TA325109]) IHC analysis in formalin fixed and paraffin embedded lung tissue followed by peroxidase conjugation of the secondary antibody and DAB staining. This data demonstrates the use of the ADH7 Antibody (C-Term) for immunohistochemistry. Clinical relevance has not been evaluated.



Confocal immunofluorescent analysis of ADH7 Antibody (C-Term) (Cat. #[TA325109]) with NCI-H460 cell followed by Alexa Fluor® 488-conjugated goat anti-rabbit IgG (green). DAPI was used to stain the cell nuclear (blue).



ADH7 Antibody (C-Term) (Cat. #[TA325109]) flow cytometric analysis of K562 cells (right histogram) compared to a negative control cell (left histogram). FITC-conjugated goat-anti-rabbit secondary antibodies were used for the analysis.