

Product datasheet for **TA325108S**

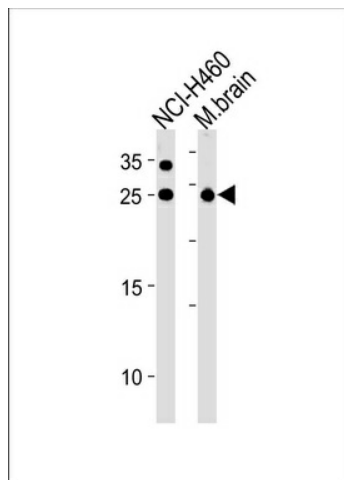
RAB3C Rabbit Polyclonal Antibody

Product data:

Product Type:	Primary Antibodies
Applications:	WB
Recommended Dilution:	WB: 1:1000
Reactivity:	Human, Mouse (Predicted: Bovine)
Host:	Rabbit
Isotype:	IgG
Clonality:	Polyclonal
Immunogen:	This RAB3C antibody is generated from rabbits immunized with a KLH conjugated synthetic peptide between 136-164 amino acids from the Central region of human RAB3C.
Formulation:	Purified polyclonal antibody supplied in PBS with 0.09% (W/V) sodium azide.
Concentration:	lot specific
Purification:	This antibody is purified through a protein A column, followed by peptide affinity purification.
Conjugation:	Unconjugated
Storage:	Store at -20°C as received.
Stability:	Stable for 12 months from date of receipt.
Predicted Protein Size:	25952 Da
Gene Name:	RAB3C, member RAS oncogene family
Database Link:	NP_612462 Entrez Gene 67295 Mouse Entrez Gene 115827 Human Q96E17
Synonyms:	2700062I01Rik; 3110015B08Rik; 3110037E15Rik; AI850886; member RAS oncogene family; MGC124069; RAB3C; small GTP-binding protein Rab3C
Protein Families:	Druggable Genome



[View online »](#)

Product images:

RAB3C Antibody (Center) (Cat. #[TA325108])
western blot analysis in NCI-H460 cell line and
mouse brain tissue lysates (35ug/lane). This
demonstrates the RAB3C antibody detected the
RAB3C protein (arrow).