

## Product datasheet for **TA325107S**

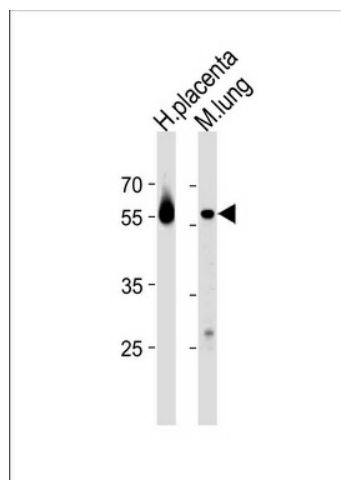
### CREB3L2 Rabbit Polyclonal Antibody

#### Product data:

Product Type:	Primary Antibodies
Applications:	WB
Recommended Dilution:	WB: 1:1000
Reactivity:	Human, Mouse
Host:	Rabbit
Isotype:	IgG
Clonality:	Polyclonal
Immunogen:	This CREB3L2 antibody is generated from rabbits immunized with a KLH conjugated synthetic peptide between 490-517 amino acids from the C-terminal region of human CREB3L2.
Formulation:	Purified polyclonal antibody supplied in PBS with 0.09% (W/V) sodium azide.
Concentration:	lot specific
Purification:	This antibody is purified through a protein A column, followed by peptide affinity purification.
Conjugation:	Unconjugated
Storage:	Store at -20°C as received.
Stability:	Stable for 12 months from date of receipt.
Predicted Protein Size:	57415 Da
Gene Name:	cAMP responsive element binding protein 3-like 2
Database Link:	<a href="#">NP_919047</a> <a href="#">Entrez Gene 208647 Mouse</a> <a href="#">Entrez Gene 64764 Human</a> <a href="#">Q70SY1</a>
Synonyms:	BBF2H7
Protein Families:	Transcription Factors
Protein Pathways:	Huntington's disease, Melanogenesis, Prostate cancer



[View online »](#)

**Product images:**

CREB3L2 Antibody (C-term) (Cat. #[TA325107])  
western blot analysis in human placenta and  
mouse lung tissue lysates (35ug/lane). This  
demonstrates the CREB3L2 antibody detected  
the CREB3L2 protein (arrow).