

## Product datasheet for **TA325106**

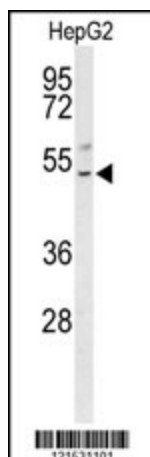
### BLZF1 Rabbit Polyclonal Antibody

#### Product data:

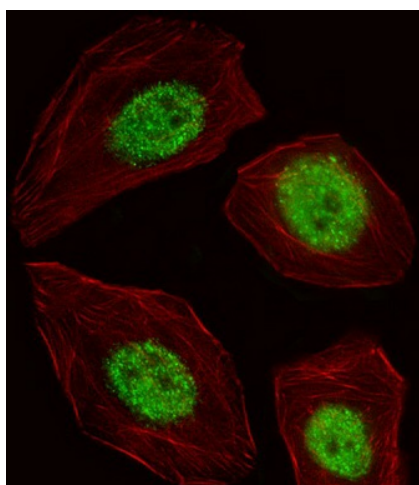
Product Type:	Primary Antibodies
Applications:	IF, WB
Recommended Dilution:	IF: 1:10~50, WB: 1:1000
Reactivity:	Human
Host:	Rabbit
Isotype:	IgG
Clonality:	Polyclonal
Immunogen:	This BLZF1 antibody is generated from rabbits immunized with a KLH conjugated synthetic peptide between 156-184 amino acids from the Central region of human BLZF1.
Formulation:	Purified polyclonal antibody supplied in PBS with 0.09% (W/V) sodium azide.
Concentration:	lot specific
Purification:	This antibody is purified through a protein A column, followed by peptide affinity purification.
Conjugation:	Unconjugated
Storage:	Store at -20°C as received.
Stability:	Stable for 12 months from date of receipt.
Predicted Protein Size:	44910 Da
Gene Name:	basic leucine zipper nuclear factor 1
Database Link:	<a href="#">NP_003657</a> <a href="#">Entrez Gene 8548 Human</a> <a href="#">Q9H2G9</a>
Synonyms:	GOLGIN-45; JEM-1; JEM-1s; JEM1
Protein Families:	Transcription Factors



[View online »](#)

**Product images:**

Western blot analysis of BLZF1 Antibody (Center) (Cat. #TA325106) in HepG2 cell line lysates (35ug/lane). BLZF1 (arrow) was detected using the purified Pab.



IF image of A549 cell stained with BLZF1 Antibody (Center) (Cat#TA325106).A549 cells were incubated with BLZF1 primary antibody (1:25, 1 h at 37°C). For secondary antibody, Alexa Fluor® 488 conjugated donkey anti-rabbit antibody (green) was used (1:400).Cytoplasmic actin was counterstained with Alexa Fluor® 555 (red) conjugated Phalloidin (7 units/ml).BLZF1 immunoreactivity is localized to Nucleus significantly.