

Product datasheet for **TA325105S**

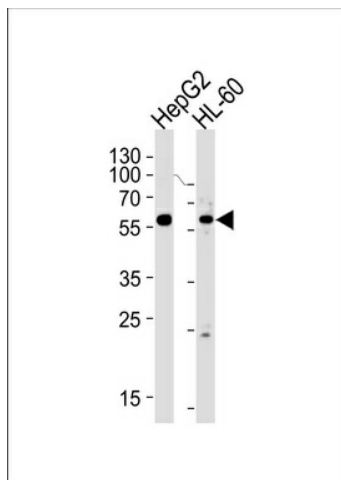
FANCC Rabbit Polyclonal Antibody

Product data:

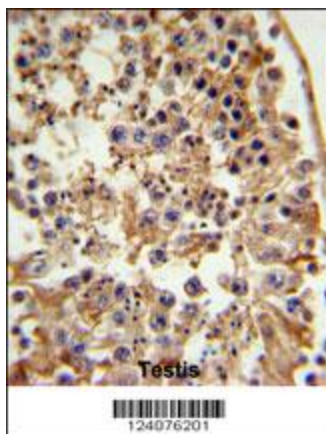
Product Type:	Primary Antibodies
Applications:	FC, IF, IHC, WB
Recommended Dilution:	WB: 1:1000, IF: 1:25, IHC: 1:50~100, FC: 1:10~50
Reactivity:	Human
Host:	Rabbit
Isotype:	IgG
Clonality:	Polyclonal
Immunogen:	This FANCC antibody is generated from rabbits immunized with a KLH conjugated synthetic peptide between 527-555 amino acids from the C-terminal region of human FANCC.
Formulation:	Purified polyclonal antibody supplied in PBS with 0.09% (W/V) sodium azide.
Concentration:	lot specific
Purification:	This antibody is purified through a protein A column, followed by peptide affinity purification.
Conjugation:	Unconjugated
Storage:	Store at -20°C as received.
Stability:	Stable for 12 months from date of receipt.
Predicted Protein Size:	63429 Da
Gene Name:	Fanconi anemia complementation group C
Database Link:	NP_000127 Entrez Gene 2176 Human Q00597
Synonyms:	FA3; FAC; FACC
Protein Families:	Druggable Genome



[View online »](#)

Product images:

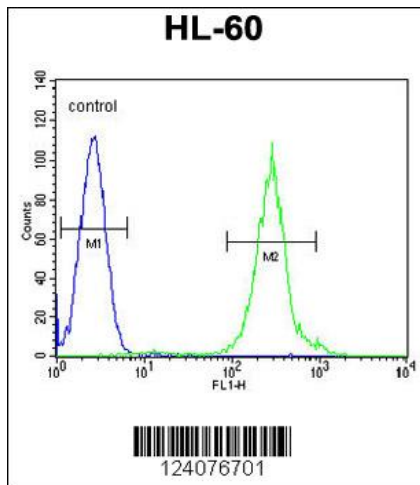
Western blot analysis of lysates from HepG2, HL-60 cell line (from left to right), using FANCC Antibody (C-term) (Cat. #[TA325105]).[TA325105] was diluted at 1:1000 at each lane. A goat anti-rabbit IgG H&L (HRP) at 1:5000 dilution was used as the secondary antibody. Lysates at 35ug per lane.



FANCC Antibody (C-term) (Cat. #[TA325105]) IHC analysis in formalin fixed and paraffin embedded testis tissue followed by peroxidase conjugation of the secondary antibody and DAB staining. This data demonstrates the use of the FANCC Antibody (C-term) for immunohistochemistry. Clinical relevance has not been evaluated.



Immunofluorescent analysis of U251 cells, using FANCC Antibody (C-term) (Cat. #[TA325105]). [TA325105] was diluted at 1:25 dilution. Alexa Fluor 488-conjugated goat anti-rabbit IgG at 1:400 dilution was used as the secondary antibody (green). DAPI was used to stain the cell nuclear (blue).



FANCC Antibody (C-term) (Cat. #[TA325105]) flow cytometric analysis of HL-60 cells (right histogram) compared to a negative control cell (left histogram). FITC-conjugated goat-anti-rabbit secondary antibodies were used for the analysis.