

Product datasheet for **TA325103S**

TBX1 Rabbit Polyclonal Antibody

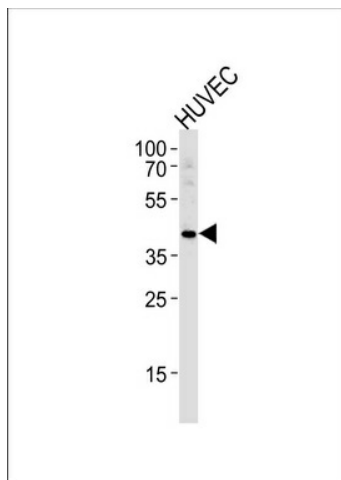
Product data:

Product Type:	Primary Antibodies
Applications:	IF, IHC, WB
Recommended Dilution:	WB: 1:1000, IF: 1:10~50, IHC: 1:50~100
Reactivity:	Human
Host:	Rabbit
Isotype:	IgG
Clonality:	Polyclonal
Immunogen:	This TBX1 antibody is generated from rabbits immunized with a KLH conjugated synthetic peptide between 327-356 amino acids from the C-terminal region of human TBX1.
Formulation:	Purified polyclonal antibody supplied in PBS with 0.09% (W/V) sodium azide.
Concentration:	lot specific
Purification:	This antibody is purified through a protein A column, followed by peptide affinity purification.
Conjugation:	Unconjugated
Storage:	Store at -20°C as received.
Stability:	Stable for 12 months from date of receipt.
Predicted Protein Size:	43133 Da
Gene Name:	T-box 1
Database Link:	NP_005983 Entrez Gene 6899 Human O43435
Synonyms:	CAFS; CATCH22; CTHM; DGCR; DGS; DORV; TBX1C; TGA; VCF; VCFS
Protein Families:	Transcription Factors

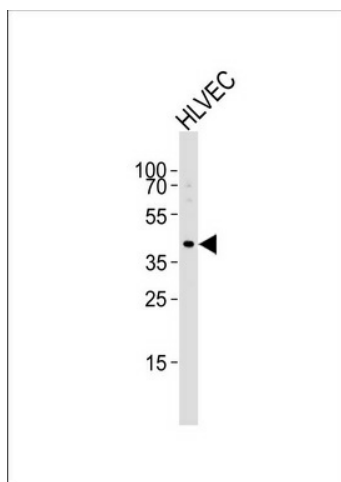


[View online »](#)

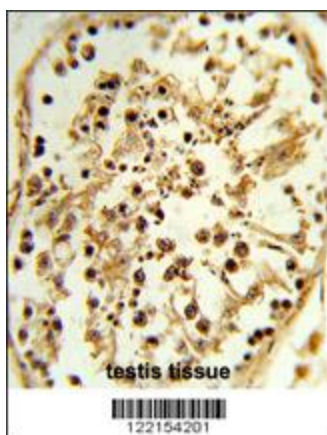
Product images:



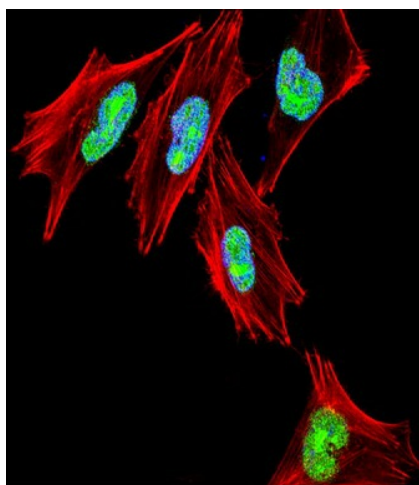
TBX1 Antibody (C-term) (Cat.# [TA325103])
western blot analysis in HUVEC cell line lysates
(35ug/lane). This demonstrates the TBX1 antibody
detected the TBX1 protein (arrow).



Western blot analysis of lysate from HUVEC cell
line, using TBX1 Antibody (C-term) (Cat. #
[TA325103]). [TA325103] was diluted at 1:1000 at
each lane. A goat anti-rabbit IgG H&L (HRP) at
1:5000 dilution was used as the secondary
antibody. Lysate at 35ug.



Formalin-fixed and paraffin-embedded human testis tissue reacted with TBX1 Antibody (C-term), which was peroxidase-conjugated to the secondary antibody, followed by DAB staining. This data demonstrates the use of this antibody for immunohistochemistry; clinical relevance has not been evaluated.



IF image of A2058 cell stained with TBX1 Antibody (C-term) (Cat#[TA325103]). A2058 cells were incubated with TBX1 primary antibody (1:25, 1 h at 37°C). For secondary antibody, Alexa Fluor® 488 conjugated donkey anti-rabbit antibody (green) was used (1:400). Cytoplasmic actin was counterstained with Alexa Fluor® 555 (red) conjugated Phalloidin (7 units/ml). Nuclei were counterstained with DAPI (blue). TBX1 immunoreactivity is localized to nucleus significantly.