

Product datasheet for **TA325102**

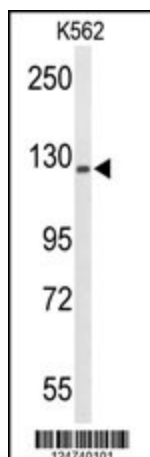
TReP132 (TRERF1) Rabbit Polyclonal Antibody

Product data:

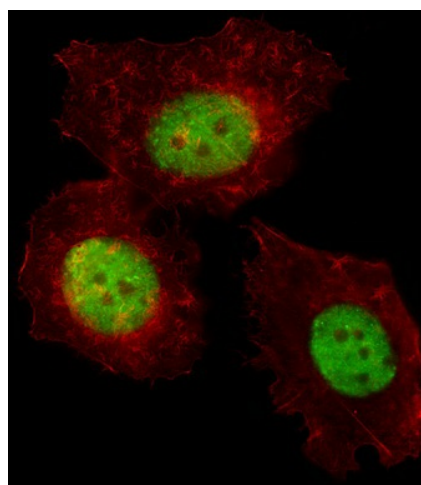
Product Type:	Primary Antibodies
Applications:	FC, IF, WB
Recommended Dilution:	IF: 1:10~50, WB: 1:1000, FC: 1:10~50
Reactivity:	Human
Host:	Rabbit
Isotype:	IgG
Clonality:	Polyclonal
Immunogen:	This TREF1 antibody is generated from rabbits immunized with a KLH conjugated synthetic peptide between 1136-1164 amino acids from the C-terminal region of human TREF1.
Formulation:	Purified polyclonal antibody supplied in PBS with 0.09% (W/V) sodium azide.
Concentration:	lot specific
Purification:	This antibody is purified through a protein A column, followed by peptide affinity purification.
Conjugation:	Unconjugated
Storage:	Store at -20°C as received.
Stability:	Stable for 12 months from date of receipt.
Predicted Protein Size:	132256 Da
Gene Name:	transcriptional regulating factor 1
Database Link:	NP_277037 Entrez Gene 55809 Human Q96PN7
Synonyms:	BCAR2; dj139D8.5; HSA277276; RAPA; TReP-132; TREP132
Protein Families:	Druggable Genome, Transcription Factors



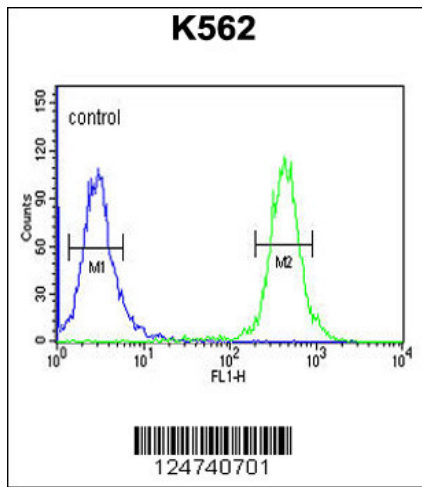
[View online »](#)

Product images:

Western blot analysis of TREF1 Antibody (C-term) (Cat. #TA325102) in K562 cell line lysates (35ug/lane). TREF1 (arrow) was detected using the purified Pab.



IF image of MCF-7 cell stained with TREF1 Antibody (C-term) (Cat#TA325102).MCF-7 cells were incubated with TREF1 primary antibody (1:25, 1 h at 37°C). For secondary antibody, Alexa Fluor® 488 conjugated donkey anti-rabbit antibody (green) was used (1:400).Cytoplasmic actin was counterstained with Alexa Fluor® 555 (red) conjugated Phalloidin (7 units/ml).TREF1 immunoreactivity is localized to Nucleus significantly.



TREF1 Antibody (C-term) (Cat. #TA325102) flow cytometric analysis of K562 cells (right histogram) compared to a negative control cell (left histogram). FITC-conjugated goat-anti-rabbit secondary antibodies were used for the analysis.