

## Product datasheet for **TA325101S**

### Neuronal membrane glycoprotein M6 a (GPM6A) Rabbit Polyclonal Antibody

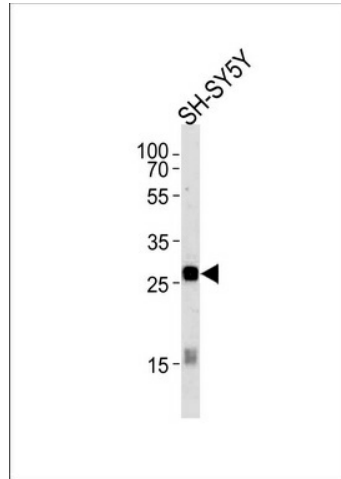
#### Product data:

Product Type:	Primary Antibodies
Applications:	FC, WB
Recommended Dilution:	WB: 1:1000, FC: 1:10~50
Reactivity:	Human (Predicted: Mouse, Rat, Bovine)
Host:	Rabbit
Isotype:	IgG
Clonality:	Polyclonal
Immunogen:	This GPM6A antibody is generated from rabbits immunized with a KLH conjugated synthetic peptide between 232-259 amino acids from the C-terminal region of human GPM6A.
Formulation:	Purified polyclonal antibody supplied in PBS with 0.09% (W/V) sodium azide.
Concentration:	lot specific
Purification:	This antibody is purified through a protein A column, followed by peptide affinity purification.
Conjugation:	Unconjugated
Storage:	Store at -20°C as received.
Stability:	Stable for 12 months from date of receipt.
Predicted Protein Size:	31210 Da
Gene Name:	glycoprotein M6A
Database Link:	<a href="#">NP_963886</a> <a href="#">Entrez Gene 234267 Mouse</a> <a href="#">Entrez Gene 306439 Rat</a> <a href="#">Entrez Gene 2823 Human</a> <a href="#">P51674</a>
Synonyms:	GPM6; M6A
Protein Families:	Transmembrane

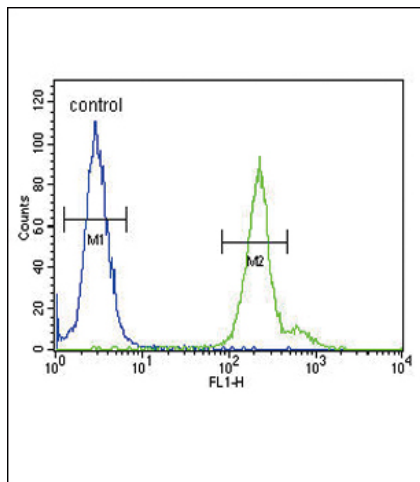


[View online »](#)

## Product images:



GPM6A Antibody (C-term) (Cat. #[TA325101]) western blot analysis in SH-SY5Y cell line lysates (35ug/lane). This demonstrates the GPM6A antibody detected the GPM6A protein (arrow).



GPM6A Antibody (C-term) (Cat. #[TA325101]) flow cytometric analysis of 293 cells (right histogram) compared to a negative control cell (left histogram). FITC-conjugated goat-anti-rabbit secondary antibodies were used for the analysis.