

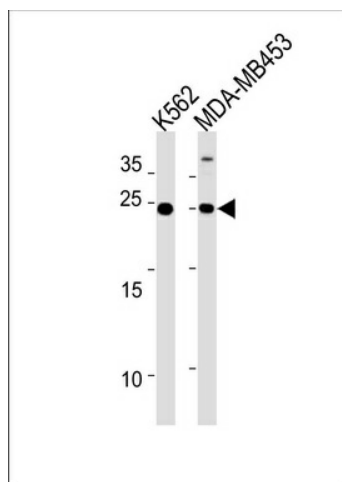
Product datasheet for **TA325100**

SSPN Rabbit Polyclonal Antibody

Product data:

Product Type:	Primary Antibodies
Applications:	WB
Recommended Dilution:	WB: 1:1000
Reactivity:	Human
Host:	Rabbit
Isotype:	IgG
Clonality:	Polyclonal
Immunogen:	This SSPN antibody is generated from rabbits immunized with a KLH conjugated synthetic peptide between 6-34 amino acids from the N-terminal region of human SSPN.
Formulation:	Purified polyclonal antibody supplied in PBS with 0.09% (W/V) sodium azide.
Concentration:	lot specific
Purification:	This antibody is purified through a protein A column, followed by peptide affinity purification.
Conjugation:	Unconjugated
Storage:	Store at -20°C as received.
Stability:	Stable for 12 months from date of receipt.
Predicted Protein Size:	26618 Da
Gene Name:	sarcospan
Database Link:	NP_005077 Entrez Gene 8082 Human Q14714
Synonyms:	DAGA5; KRAG; NSPN; SPN1; SPN2
Protein Families:	Druggable Genome, Transmembrane

[View online »](#)

Product images:

SSPN Antibody (N-term) (Cat. #TA325100)
western blot analysis in K562, MDA-MB453 cell
line lysates (35ug/lane). This demonstrates the
SSPN antibody detected the SSPN protein
(arrow).