

## Product datasheet for **TA325099S**

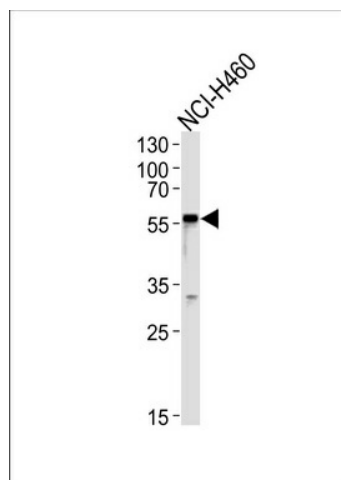
### GABRA2 Rabbit Polyclonal Antibody

#### Product data:

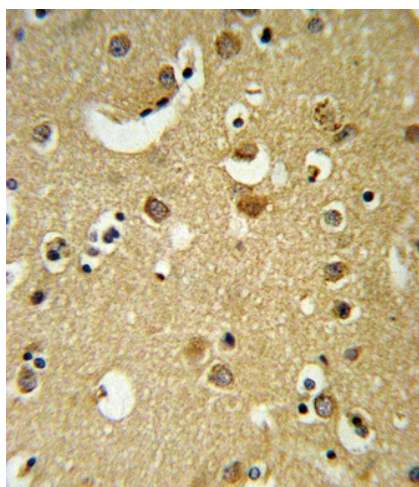
Product Type:	Primary Antibodies
Applications:	FC, IHC, WB
Recommended Dilution:	WB: 1:1000, IHC: 1:10~50, FC: 1:10~50
Reactivity:	Human (Predicted: Mouse, Rat, Bovine)
Host:	Rabbit
Isotype:	IgG
Clonality:	Polyclonal
Immunogen:	This GABRA2 antibody is generated from rabbits immunized with a KLH conjugated synthetic peptide between 378-406 amino acids from the C-terminal region of human GABRA2.
Formulation:	Purified polyclonal antibody supplied in PBS with 0.09% (W/V) sodium azide.
Concentration:	lot specific
Purification:	This antibody is purified through a protein A column, followed by peptide affinity purification.
Conjugation:	Unconjugated
Storage:	Store at -20°C as received.
Stability:	Stable for 12 months from date of receipt.
Predicted Protein Size:	51326 Da
Gene Name:	gamma-aminobutyric acid type A receptor alpha2 subunit
Database Link:	<a href="#">NP_000798</a> <a href="#">Entrez Gene 14395 Mouse</a> <a href="#">Entrez Gene 289606 Rat</a> <a href="#">Entrez Gene 2555 Human</a> <a href="#">P47869</a>
Synonyms:	FLJ97076
Protein Families:	Druggable Genome, Ion Channels: Cys-loop Receptors, Transmembrane
Protein Pathways:	Neuroactive ligand-receptor interaction



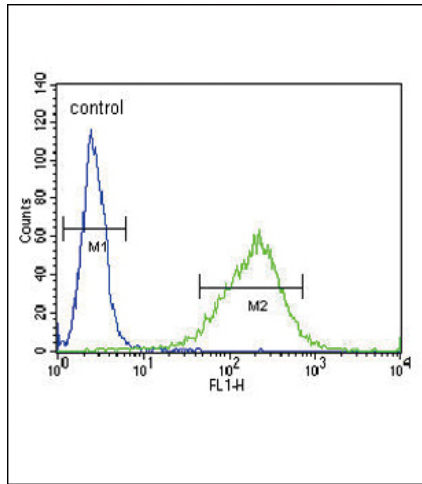
[View online »](#)

**Product images:**

GABRA2 Antibody (C-term) (Cat.# [TA325099]) western blot analysis in NCI-H460 cell line lysates (35ug/lane). This demonstrates the GABRA2 antibody detected the GABRA2 protein (arrow).



GABRA2 Antibody (C-term) (Cat. # [TA325099]) IHC analysis in formalin fixed and paraffin embedded brain tissue followed by peroxidase conjugation of the secondary antibody and DAB staining. This data demonstrates the use of the GABRA2 Antibody (C-term) for immunohistochemistry. Clinical relevance has not been evaluated.



GABRA2 Antibody (C-term) (Cat. #[TA325099]) flow cytometric analysis of NCI-H460 cells (right histogram) compared to a negative control cell (left histogram). FITC-conjugated goat-anti-rabbit secondary antibodies were used for the analysis.