

## Product datasheet for **TA325096S**

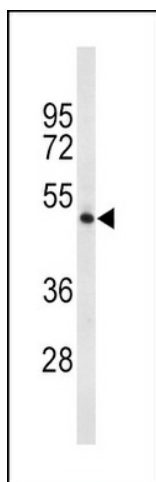
### Tryptophan 5 hydroxylase 2 (TPH2) Rabbit Polyclonal Antibody

#### Product data:

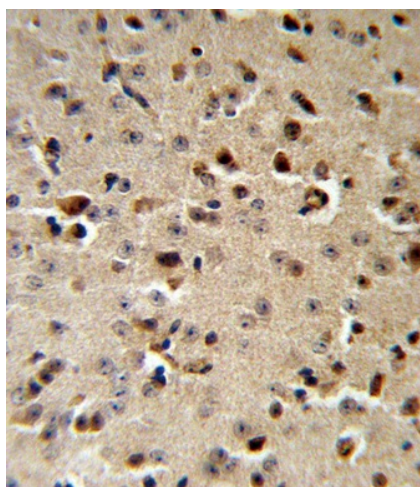
Product Type:	Primary Antibodies
Applications:	FC, IHC, WB
Recommended Dilution:	WB: 1:1000, IHC: 1:10~50, FC: 1:10~50
Reactivity:	Human (Predicted: Mouse, Rat)
Host:	Rabbit
Isotype:	IgG
Clonality:	Polyclonal
Immunogen:	This TPH2 antibody is generated from rabbits immunized with a KLH conjugated synthetic peptide between 168-193 amino acids from the Central region of human TPH2.
Formulation:	Purified polyclonal antibody supplied in PBS with 0.09% (W/V) sodium azide.
Concentration:	lot specific
Purification:	This antibody is purified through a protein A column, followed by peptide affinity purification.
Conjugation:	Unconjugated
Storage:	Store at -20°C as received.
Stability:	Stable for 12 months from date of receipt.
Predicted Protein Size:	56057 Da
Gene Name:	tryptophan hydroxylase 2
Database Link:	<a href="#">NP_775489</a> <a href="#">Entrez Gene 216343 Mouse</a> <a href="#">Entrez Gene 317675 Rat</a> <a href="#">Entrez Gene 121278 Human</a> <a href="#">Q8IWU9</a>
Synonyms:	ADHD7; NTPH
Protein Families:	Druggable Genome
Protein Pathways:	Metabolic pathways, Tryptophan metabolism



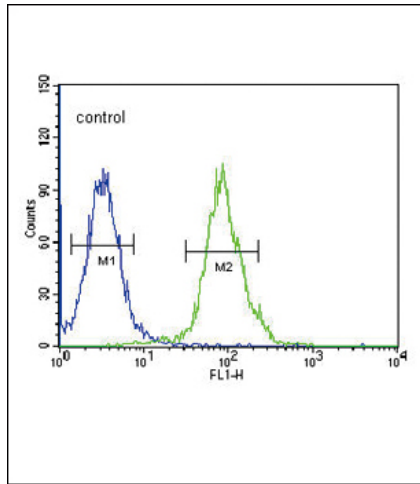
[View online »](#)

**Product images:**

Western blot analysis of TPH2 Antibody (Center) (Cat. #[TA325096]) in 293 cell line lysates (35ug/lane). TPH2 (arrow) was detected using the purified Pab.



TPH2 Antibody (Center) (Cat. #[TA325096]) IHC analysis in formalin fixed and paraffin embedded mouse brain followed by peroxidase conjugation of the secondary antibody and DAB staining. This data demonstrates the use of the TPH2 Antibody (Center) for immunohistochemistry. Clinical relevance has not been evaluated.



TPH2 Antibody (Center) (Cat. #[TA325096]) flow cytometric analysis of 293 cells (right histogram) compared to a negative control cell (left histogram). FITC-conjugated goat-anti-rabbit secondary antibodies were used for the analysis.