

## Product datasheet for **TA325095**

### G0 Protein alpha (GNAO1) Rabbit Polyclonal Antibody

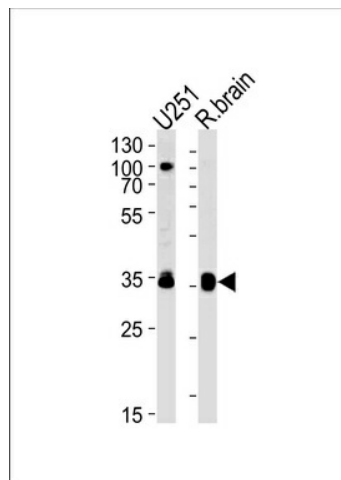
#### Product data:

Product Type:	Primary Antibodies
Applications:	FC, WB
Recommended Dilution:	WB: 1:1000, FC: 1:10~50
Reactivity:	Human, Mouse (Predicted: Bovine)
Host:	Rabbit
Isotype:	IgG
Clonality:	Polyclonal
Immunogen:	This GNAO1 antibody is generated from rabbits immunized with a KLH conjugated synthetic peptide between 291-320 amino acids from the C-terminal region of human GNAO1.
Formulation:	Purified polyclonal antibody supplied in PBS with 0.09% (W/V) sodium azide.
Concentration:	lot specific
Purification:	This antibody is purified through a protein A column, followed by peptide affinity purification.
Conjugation:	Unconjugated
Storage:	Store at -20°C as received.
Stability:	Stable for 12 months from date of receipt.
Predicted Protein Size:	40051 Da
Gene Name:	G protein subunit alpha o1
Database Link:	<a href="#">NP_066268</a> <a href="#">Entrez Gene 14681 Mouse</a> <a href="#">Entrez Gene 2775 Human</a> <a href="#">P09471</a>
Synonyms:	EIEE17; G-ALPHA-o; GNAO; HLA-DQB1
Protein Families:	Druggable Genome
Protein Pathways:	Long-term depression, Melanogenesis

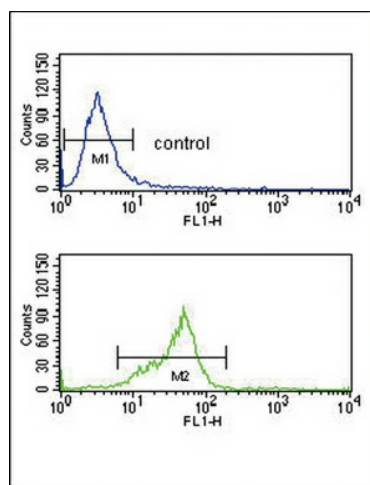


[View online »](#)

## Product images:



GNAO1 Antibody (C-term) (Cat.# TA325095) western blot analysis in U251 cell line and rat brain lysates (35ug/lane). This demonstrates the GNAO1 antibody detected the GNAO1 protein (arrow).



GNAO1 Antibody (C-term) (Cat. #TA325095) flow cytometry analysis of K562 cells (bottom histogram) compared to a negative control cell (top histogram). FITC-conjugated goat-anti-rabbit secondary antibodies were used for the analysis.