

Product datasheet for TA325093

GCLM Rabbit Polyclonal Antibody

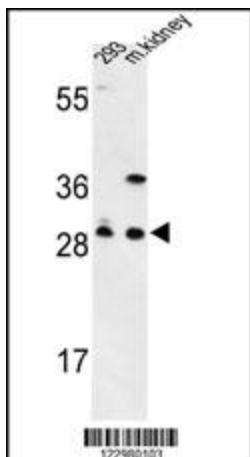
Product data:

Product Type:	Primary Antibodies
Applications:	FC, IF, IHC, WB
Recommend Dilution:	WB: 1:1000, IHC: 1:50~100, FC: 1:10~50, IF: 1:10~50
Reactivity:	Human, Mouse
Host:	Rabbit
Isotype:	IgG
Clonality:	Polyclonal
Immunogen:	This GCLM antibody is generated from rabbits immunized with a KLH conjugated synthetic peptide between 246-274 amino acids from the C-terminal region of human GCLM.
Formulation:	Purified polyclonal antibody supplied in PBS with 0.09% (W/V) sodium azide.
Concentration:	lot specific
Purification:	This antibody is purified through a protein A column, followed by peptide affinity purification.
Storage:	Store at -20°C as received.
Stability:	Stable for 12 months from date of receipt.
Predicted Protein Size:	30727 Da
Gene Name:	glutamate-cysteine ligase modifier subunit
Database Link:	NP_002052 Entrez Gene 14630 Mouse Entrez Gene 2730 Human
Synonyms:	GLCLR
Protein Families:	Druggable Genome
Protein Pathways:	Glutathione metabolism, Metabolic pathways

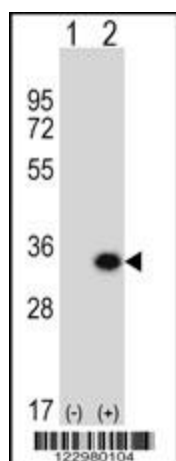


[View online »](#)

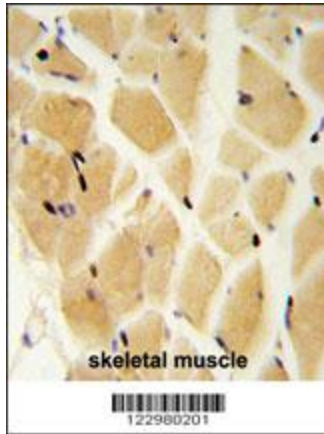
Product images:



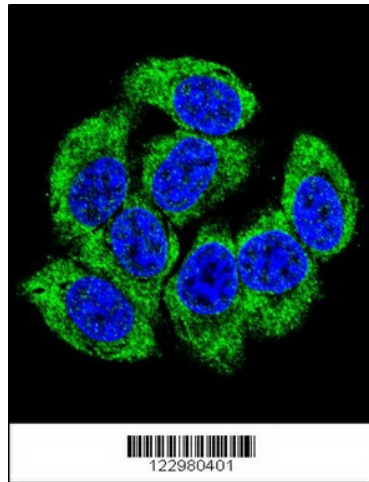
Western blot analysis of GCLM Antibody (C-term) (Cat. #TA325093) in 293 cell line and mouse kidney tissue lysates (35ug/lane). GCLM (arrow) was detected using the purified Pab.



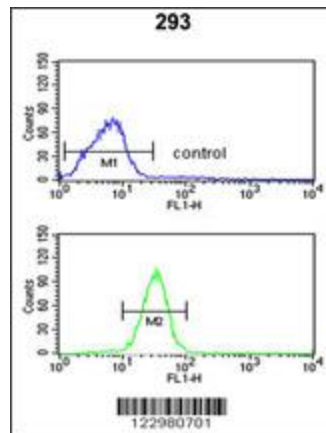
Western blot analysis of GCLM (arrow) using rabbit polyclonal GCLM Antibody (C-term) (Cat. #TA325093). 293 cell lysates (2 ug/lane) either nontransfected (Lane 1) or transiently transfected (Lane 2) with the GCLM gene.



GCLM Antibody (C-term) (Cat. #TA325093) IHC analysis in formalin fixed and paraffin embedded skeletal muscle followed by peroxidase conjugation of the secondary antibody and DAB staining. This data demonstrates the use of the GCLM Antibody (C-term) for immunohistochemistry. Clinical relevance has not been evaluated.



Confocal immunofluorescent analysis of GCLM Antibody (C-term) (Cat#TA325093) with 293 cell followed by Alexa Fluor 488-conjugated goat anti-rabbit IgG (green). DAPI was used to stain the cell nuclear (blue).



GCLM Antibody (C-term) (Cat. #TA325093) flow cytometric analysis of 293 cells (bottom histogram) compared to a negative control cell (top histogram). FITC-conjugated goat-anti-rabbit secondary antibodies were used for the analysis.