

## Product datasheet for **TA325090S**

### **EPC1 Rabbit Polyclonal Antibody**

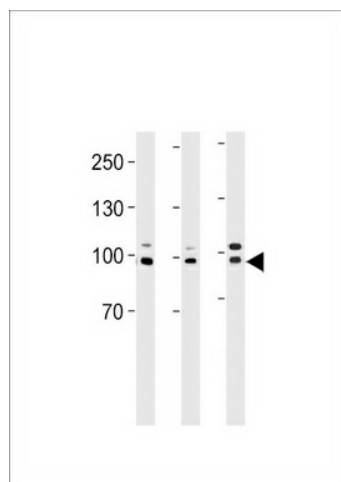
#### **Product data:**

Product Type:	Primary Antibodies
Applications:	WB
Recommended Dilution:	WB: 1:1000
Reactivity:	Human, Mouse
Host:	Rabbit
Isotype:	IgG
Clonality:	Polyclonal
Immunogen:	This EPC1 antibody is generated from rabbits immunized with a KLH conjugated synthetic peptide between 305-334 amino acids from the Central region of human EPC1.
Formulation:	Purified polyclonal antibody supplied in PBS with 0.09% (W/V) sodium azide.
Concentration:	lot specific
Purification:	This antibody is purified through a protein A column, followed by peptide affinity purification.
Conjugation:	Unconjugated
Storage:	Store at -20°C as received.
Stability:	Stable for 12 months from date of receipt.
Predicted Protein Size:	93463 Da
Gene Name:	enhancer of polycomb homolog 1
Database Link:	<a href="#">NP_079485</a> <a href="#">Entrez Gene 13831 Mouse</a> <a href="#">Entrez Gene 80314 Human</a> <a href="#">Q9H2F5</a>
Synonyms:	Epl1
Protein Families:	Transcription Factors



[View online »](#)

## Product images:



EPC1 Antibody (Center) (Cat. #TA325090])  
western blot analysis in A2058, Hela cell line and  
mouse heart tissue lysates (35ug/lane). This  
demonstrates the EPC1 antibody detected the  
EPC1 protein (arrow).