

Product datasheet for **TA325089**

gamma Catenin (JUP) Rabbit Polyclonal Antibody

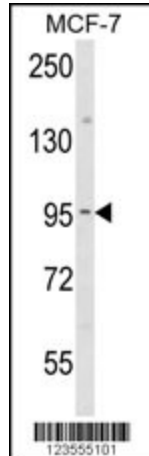
Product data:

Product Type:	Primary Antibodies
Applications:	FC, IHC, WB
Recommended Dilution:	WB: 1:1000, IHC: 1:50~100, FC: 1:10~50
Reactivity:	Human (Predicted: Mouse, Rat, Bovine, Pig)
Host:	Rabbit
Isotype:	IgG
Clonality:	Polyclonal
Immunogen:	This JUP antibody is generated from rabbits immunized with a KLH conjugated synthetic peptide between 636-663 amino acids from the C-terminal region of human JUP.
Formulation:	Purified polyclonal antibody supplied in PBS with 0.09% (W/V) sodium azide.
Concentration:	lot specific
Purification:	This antibody is purified through a protein A column, followed by peptide affinity purification.
Conjugation:	Unconjugated
Storage:	Store at -20°C as received.
Stability:	Stable for 12 months from date of receipt.
Predicted Protein Size:	81745 Da
Gene Name:	junction plakoglobin
Database Link:	NP_002221 Entrez Gene 16480 Mouse Entrez Gene 81679 Rat Entrez Gene 3728 Human P14923
Synonyms:	ARVD12; CTNNG; DP3; DPIII; PDGB; PKGB
Protein Families:	Druggable Genome
Protein Pathways:	Acute myeloid leukemia, Arrhythmogenic right ventricular cardiomyopathy (ARVC), Pathways in cancer

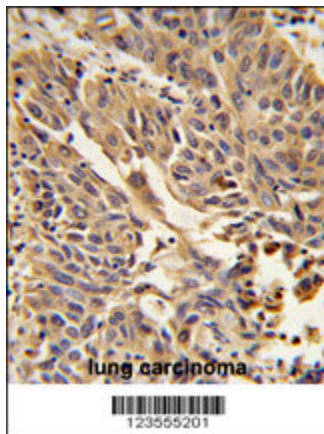


[View online »](#)

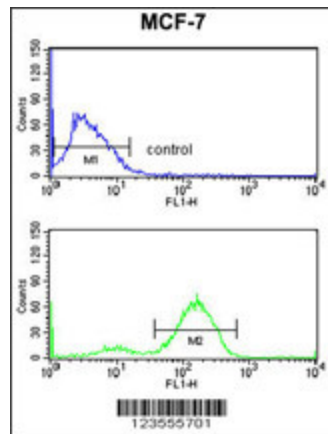
Product images:



Western blot analysis of JUP Antibody (C-term) (Cat. #TA325089) in MCF-7 cell line lysates (35ug/lane). JUP (arrow) was detected using the purified Pab.



Formalin-fixed and paraffin-embedded human lung carcinoma reacted with JUP Antibody (C-term), which was peroxidase-conjugated to the secondary antibody, followed by DAB staining. This data demonstrates the use of this antibody for immunohistochemistry; clinical relevance has not been evaluated.



JUP Antibody (C-term) (Cat. #TA325089) flow cytometry analysis of MCF-7 cells (bottom histogram) compared to a negative control cell (top histogram). FITC-conjugated goat-anti-rabbit secondary antibodies were used for the analysis.