

## Product datasheet for **TA325088S**

### GOT2 Rabbit Polyclonal Antibody

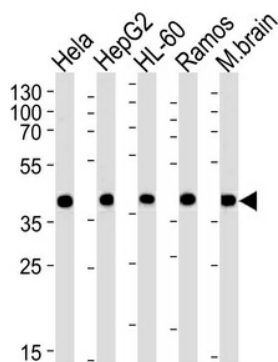
#### Product data:

Product Type:	Primary Antibodies
Applications:	FC, WB
Recommended Dilution:	WB: 1:1000, FC: 1:10~50
Reactivity:	Human (Predicted: Mouse, Rat, Bovine, Chicken, Pig, Monkey)
Host:	Rabbit
Isotype:	IgG
Clonality:	Polyclonal
Immunogen:	This GOT2 antibody is generated from rabbits immunized with a KLH conjugated synthetic peptide between 33-61 amino acids from the N-terminal region of human GOT2.
Formulation:	Purified polyclonal antibody supplied in PBS with 0.09% (W/V) sodium azide.
Concentration:	lot specific
Purification:	This antibody is purified through a protein A column, followed by peptide affinity purification.
Conjugation:	Unconjugated
Storage:	Store at -20°C as received.
Stability:	Stable for 12 months from date of receipt.
Predicted Protein Size:	47518 Da
Gene Name:	glutamic-oxaloacetic transaminase 2
Database Link:	<a href="#">NP_002071</a> <a href="#">Entrez Gene 14719 Mouse</a> <a href="#">Entrez Gene 25721 Rat</a> <a href="#">Entrez Gene 707896 Monkey</a> <a href="#">Entrez Gene 2806 Human</a> <a href="#">P00505</a>
Synonyms:	KAT4; KATIV; mitAAT
Protein Families:	Stem cell - Pluripotency
Protein Pathways:	Alanine, aspartate and glutamate metabolism, Arginine and proline metabolism, Cysteine and methionine metabolism, Metabolic pathways, Phenylalanine, tyrosine and tryptophan biosynthesis, Phenylalanine metabolism, Tyrosine metabolism

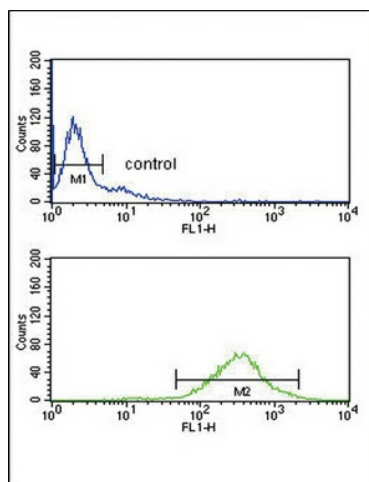


[View online »](#)

## Product images:



Western blot analysis of lysates from HeLa, HepG2, HL-60, Ramos, mouse brain cell line (from left to right), using GOT2 Antibody (N-term) (Cat. #TA325088). [TA325088] was diluted at 1:1000 at each lane. A goat anti-rabbit IgG H&L (HRP) at 1:5000 dilution was used as the secondary antibody. Lysates at 35ug per lane.



GOT2 Antibody (N-term) (Cat. #TA325088) flow cytometry analysis of Ramos cells (bottom histogram) compared to a negative control cell (top histogram). FITC-conjugated goat-anti-rabbit secondary antibodies were used for the analysis.