

## Product datasheet for **TA325087**

### EMX1 Rabbit Polyclonal Antibody

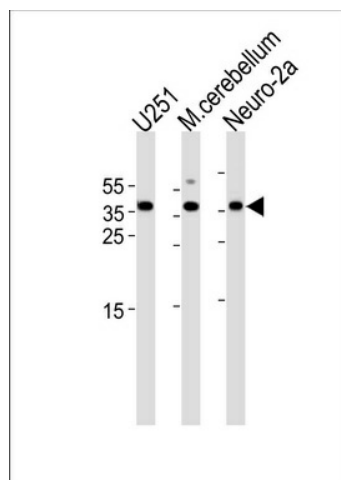
#### Product data:

Product Type:	Primary Antibodies
Applications:	FC, IF, WB
Recommended Dilution:	WB: 1:1000, FC: 1:10~50, IF: 1:10~50
Reactivity:	Human, Mouse
Host:	Rabbit
Isotype:	IgG
Clonality:	Polyclonal
Immunogen:	This EMX1 antibody is generated from rabbits immunized with a KLH conjugated synthetic peptide between 228-257 amino acids from the C-terminal region of human EMX1.
Formulation:	Purified polyclonal antibody supplied in PBS with 0.09% (W/V) sodium azide.
Concentration:	lot specific
Purification:	This antibody is purified through a protein A column, followed by peptide affinity purification.
Conjugation:	Unconjugated
Storage:	Store at -20°C as received.
Stability:	Stable for 12 months from date of receipt.
Predicted Protein Size:	28039 Da
Gene Name:	empty spiracles homeobox 1
Database Link:	<a href="#">NP_004088</a> <a href="#">Entrez Gene 13796 Mouse</a> <a href="#">Entrez Gene 2016 Human</a> <a href="#">Q04741</a>
Synonyms:	empty spiracles homeobox 1; empty spiracles homolog 1
Protein Families:	Druggable Genome, ES Cell Differentiation/IPS

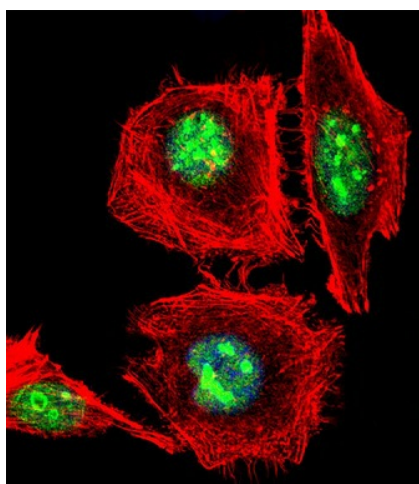


[View online »](#)

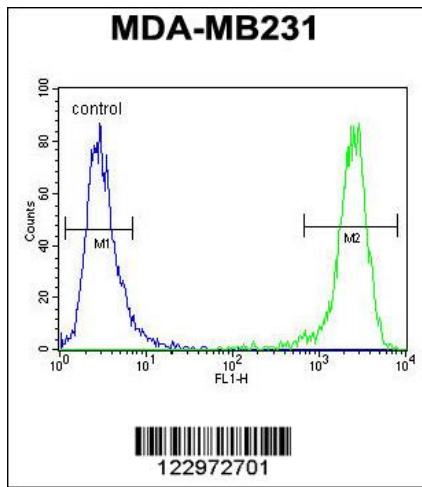
## Product images:



EMX1 Antibody (C-term) (Cat. #TA325087) western blot analysis in U251 and Neuro-2a cell line mouse cerebellum tissue lysates (35ug/lane). This demonstrates the EMX1 antibody detected the EMX1 protein (arrow).



IF image of HeLa cell stained with EMX1 Antibody (C-term) (Cat#TA325087). HeLa cells were incubated with EMX1 primary antibody (1:25, 1 h at 37°C). For secondary antibody, Alexa Fluor® 488 conjugated donkey anti-rabbit antibody (green) was used (1:400). Cytoplasmic actin was counterstained with Alexa Fluor® 555 (red) conjugated Phalloidin (7 units/ml). Nuclei were counterstained with DAPI (blue). EMX1 immunoreactivity is localized to Nucleus significantly.



EMX1 Antibody (C-term) (Cat. #TA325087) flow cytometric analysis of MDA-MB231 cells (right histogram) compared to a negative control cell (left histogram). FITC-conjugated goat-anti-rabbit secondary antibodies were used for the analysis.