

Product datasheet for **TA325086S**

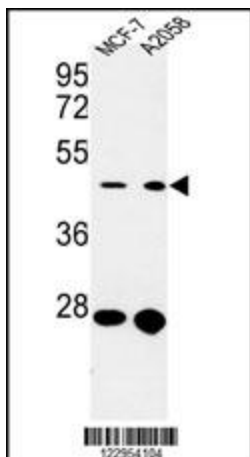
CDC37 Rabbit Polyclonal Antibody

Product data:

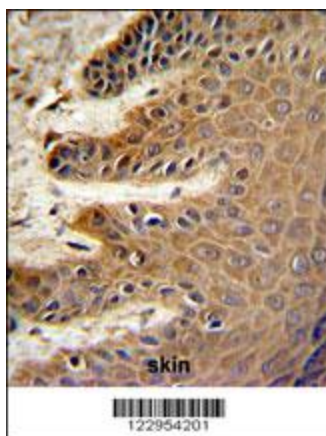
Product Type:	Primary Antibodies
Applications:	FC, IHC, WB
Recommended Dilution:	WB: 1:1000, IHC: 1:50~100, FC: 1:10~50
Reactivity:	Human
Host:	Rabbit
Isotype:	IgG
Clonality:	Polyclonal
Immunogen:	This CDC37 antibody is generated from rabbits immunized with a KLH conjugated synthetic peptide between 116-144 amino acids from the Central region of human CDC37.
Formulation:	Purified polyclonal antibody supplied in PBS with 0.09% (W/V) sodium azide.
Concentration:	lot specific
Purification:	This antibody is purified through a protein A column, followed by peptide affinity purification.
Conjugation:	Unconjugated
Storage:	Store at -20°C as received.
Stability:	Stable for 12 months from date of receipt.
Predicted Protein Size:	44468 Da
Gene Name:	cell division cycle 37
Database Link:	NP_008996 Entrez Gene 11140 Human Q16543
Synonyms:	P50CDC37

[View online »](#)

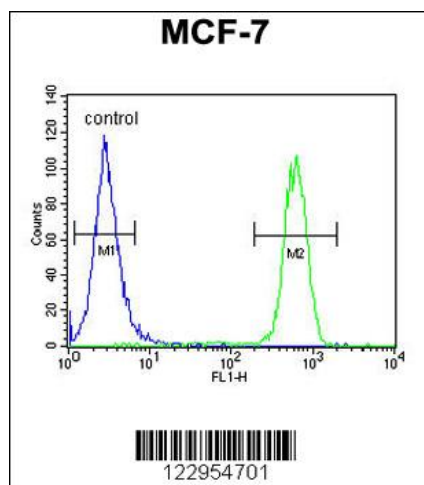
Product images:



Western blot analysis of CDC37 Antibody (Center) (Cat. #TA325086) in MCF-7, A2058 cell line lysates (35ug/lane). CDC37 (arrow) was detected using the purified Pab.



CDC37 Antibody (Center) (Cat. #TA325086) IHC analysis in formalin fixed and paraffin embedded skin followed by peroxidase conjugation of the secondary antibody and DAB staining. This data demonstrates the use of the CDC37 Antibody (Center) for immunohistochemistry. Clinical relevance has not been evaluated.



CDC37 Antibody (Center) (Cat. #[TA325086]) flow cytometric analysis of MCF-7 cells (right histogram) compared to a negative control cell (left histogram). FITC-conjugated goat-anti-rabbit secondary antibodies were used for the analysis.