

Product datasheet for TA325085

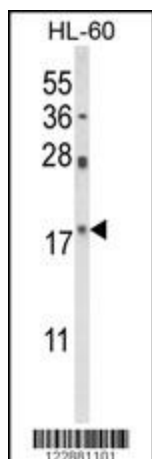
PIN1 Rabbit Polyclonal Antibody

Product data:

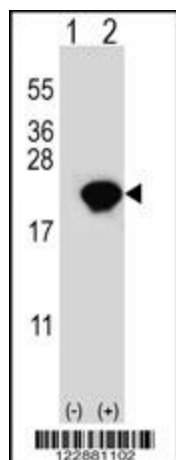
Product Type:	Primary Antibodies
Applications:	FC, IF, IHC, WB
Recommended Dilution:	WB: 1:1000, IHC: 1:50~100, FC: 1:10~50, IF: 1:10~50
Reactivity:	Human (Predicted: Monkey)
Host:	Rabbit
Isotype:	IgG
Clonality:	Polyclonal
Immunogen:	This PIN1 antibody is generated from rabbits immunized with a KLH conjugated synthetic peptide between 30-56 amino acids from the Central region of human PIN1.
Formulation:	Purified polyclonal antibody supplied in PBS with 0.09% (W/V) sodium azide.
Concentration:	lot specific
Purification:	This antibody is purified through a protein A column, followed by peptide affinity purification.
Conjugation:	Unconjugated
Storage:	Store at -20°C as received.
Stability:	Stable for 12 months from date of receipt.
Predicted Protein Size:	18243 Da
Gene Name:	peptidylprolyl cis/trans isomerase, NIMA-interacting 1
Database Link:	NP_006212 Entrez Gene 711095 Monkey Entrez Gene 5300 Human Q13526
Synonyms:	DOD; UBL5
Protein Families:	Druggable Genome
Protein Pathways:	RIG-I-like receptor signaling pathway


[View online »](#)

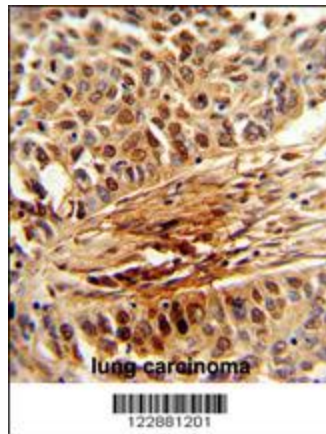
Product images:



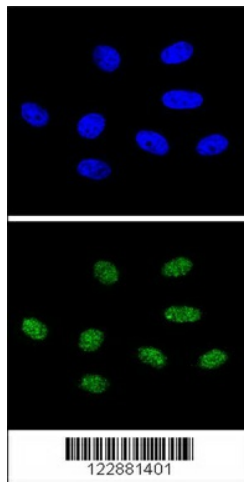
Western blot analysis of PIN1 Antibody (Center) (Cat. #TA325085) in HL-60 cell line lysates (35ug/lane). PIN1 (arrow) was detected using the purified Pab.



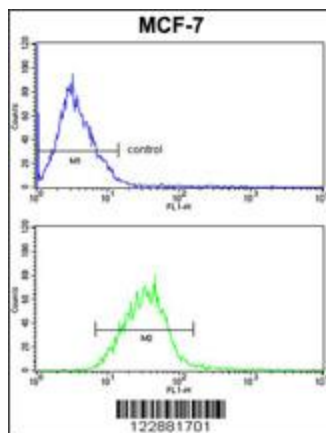
Western blot analysis of PIN1 (arrow) using rabbit polyclonal PIN1 Antibody (Center) (Cat. #TA325085). 293 cell lysates (2 ug/lane) either nontransfected (Lane 1) or transiently transfected (Lane 2) with the PIN1 gene.



Formalin-fixed and paraffin-embedded human lung carcinoma reacted with PIN1 Antibody (Center), which was peroxidase-conjugated to the secondary antibody, followed by DAB staining. This data demonstrates the use of this antibody for immunohistochemistry; clinical relevance has not been evaluated.



Confocal immunofluorescent analysis of PIN1 Antibody (Center) (Cat. #TA325085) with 293 cell followed by Alexa Fluor 488-conjugated goat anti-rabbit IgG (green). DAPI was used to stain the cell nuclear (blue).



PIN1 Antibody (Center) (Cat.#TA325085) FC analysis of MCF-7 cells (bottom histogram) compared to a negative control cell (top histogram). FITC-conjugated goat-anti-rabbit secondary antibodies were used for the analysis.