

## Product datasheet for **TA325083S**

### GBA Rabbit Polyclonal Antibody

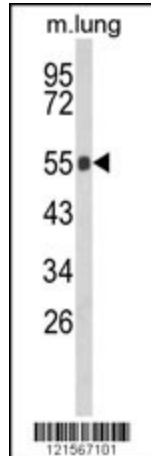
#### Product data:

Product Type:	Primary Antibodies
Applications:	FC, IHC, WB
Recommended Dilution:	WB: 1:1000, IHC: 1:50~100, FC: 1:10~50
Reactivity:	Human, Mouse (Predicted: Bovine, Pig)
Host:	Rabbit
Isotype:	IgG
Clonality:	Polyclonal
Immunogen:	This GC antibody is generated from rabbits immunized with a KLH conjugated synthetic peptide between 337-365 amino acids from the Central region of human GC.
Formulation:	Purified polyclonal antibody supplied in PBS with 0.09% (W/V) sodium azide.
Concentration:	lot specific
Purification:	This antibody is purified through a protein A column, followed by peptide affinity purification.
Conjugation:	Unconjugated
Storage:	Store at -20°C as received.
Stability:	Stable for 12 months from date of receipt.
Predicted Protein Size:	59716 Da
Gene Name:	glucosylceramidase beta
Database Link:	<a href="#">NP_000148</a> <a href="#">Entrez Gene 14466 Mouse</a> <a href="#">Entrez Gene 2629 Human</a> <a href="#">P04062</a>
Synonyms:	GBA1; GCB; GLUC
Protein Families:	Druggable Genome
Protein Pathways:	Lysosome, Metabolic pathways, Other glycan degradation, Sphingolipid metabolism

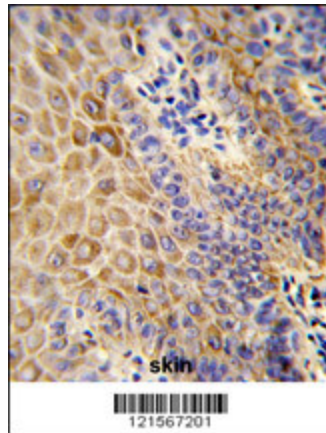


[View online »](#)

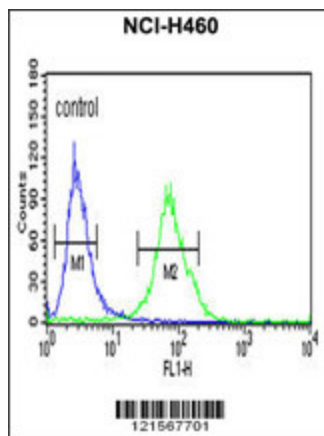
## Product images:



Western blot analysis of GC Antibody (Center) (Cat. #[TA325083]) in mouse lung tissue lysates (35ug/lane). GC (arrow) was detected using the purified Pab.



Formalin-fixed and paraffin-embedded human Skin reacted with GC Antibody (Center), which was peroxidase-conjugated to the secondary antibody, followed by DAB staining. This data demonstrates the use of this antibody for immunohistochemistry; clinical relevance has not been evaluated.



GC Antibody (Center) (Cat. #[TA325083]) flow cytometric analysis of NCI-H460 cells (right histogram) compared to a negative control cell (left histogram). FITC-conjugated goat-anti-rabbit secondary antibodies were used for the analysis.