

## Product datasheet for **TA325082**

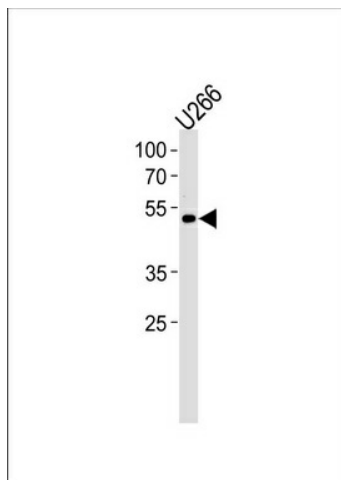
### ETV6 Rabbit Polyclonal Antibody

#### Product data:

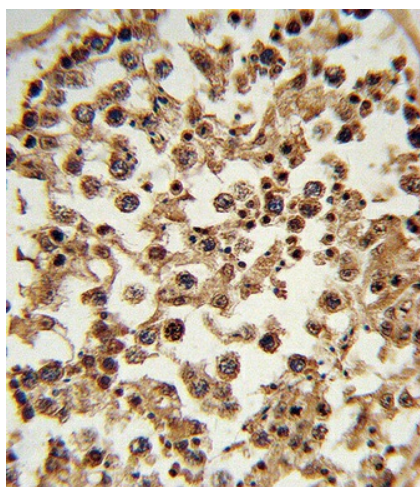
Product Type:	Primary Antibodies
Applications:	FC, IHC, WB
Recommended Dilution:	WB: 1:1000, IHC: 1:10~50, FC: 1:10~50
Reactivity:	Human (Predicted: Mouse, Bovine)
Host:	Rabbit
Isotype:	IgG
Clonality:	Polyclonal
Immunogen:	This ETV6 antibody is generated from rabbits immunized with a KLH conjugated synthetic peptide between 84-111 amino acids from the N-terminal region of human ETV6.
Formulation:	Purified polyclonal antibody supplied in PBS with 0.09% (W/V) sodium azide.
Concentration:	lot specific
Purification:	This antibody is purified through a protein A column, followed by peptide affinity purification.
Conjugation:	Unconjugated
Storage:	Store at -20°C as received.
Stability:	Stable for 12 months from date of receipt.
Predicted Protein Size:	53000 Da
Gene Name:	ETS variant 6
Database Link:	<a href="#">NP_001978</a> <a href="#">Entrez Gene 14011 Mouse</a> <a href="#">Entrez Gene 2120 Human</a> <a href="#">P41212</a>
Synonyms:	ABL; TEL; THC5
Protein Families:	Druggable Genome, Transcription Factors
Protein Pathways:	Dorso-ventral axis formation



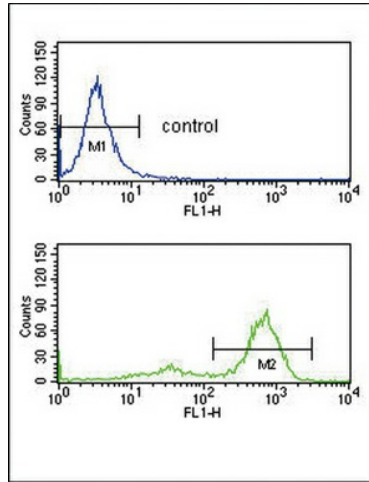
[View online »](#)

**Product images:**

ETV6 Antibody (N-term) (Cat. #TA325082) western blot analysis in U266 cell line lysates (35ug/lane). This demonstrates the ETV6 antibody detected the ETV6 protein (arrow).



Formalin-fixed and paraffin-embedded human testis tissue reacted with ETV6 Antibody (N-term), which was peroxidase-conjugated to the secondary antibody, followed by DAB staining. This data demonstrates the use of this antibody for immunohistochemistry; clinical relevance has not been evaluated.



ETV6 Antibody (N-term) (Cat. #TA325082) flow cytometry analysis of K562 cells (bottom histogram) compared to a negative control cell (top histogram). FITC-conjugated goat-anti-rabbit secondary antibodies were used for the analysis.