

Product datasheet for **TA325081**

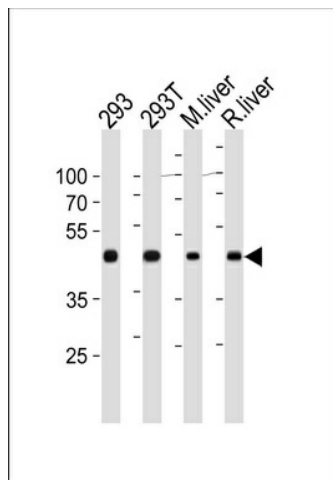
ornithine aminotransferase (OAT) Rabbit Polyclonal Antibody

Product data:

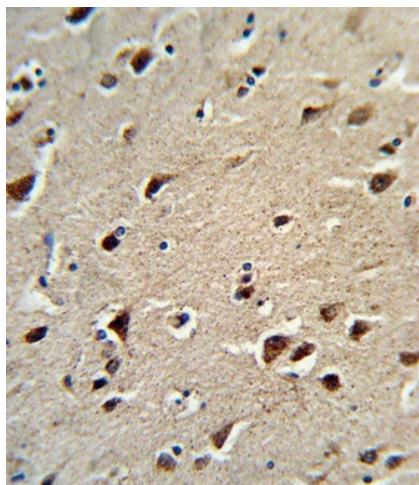
Product Type:	Primary Antibodies
Applications:	FC, IF, IHC, WB
Recommended Dilution:	WB: 1:1000, IF: 1:10~50, IHC: 1:10~50, FC: 1:10~50
Reactivity:	Human, Mouse, Rat
Host:	Rabbit
Isotype:	IgG
Clonality:	Polyclonal
Immunogen:	This OAT antibody is generated from rabbits immunized with a KLH conjugated synthetic peptide between 27-55 amino acids from the N-terminal region of human OAT.
Formulation:	Purified polyclonal antibody supplied in PBS with 0.09% (W/V) sodium azide.
Concentration:	lot specific
Purification:	This antibody is purified through a protein A column, followed by peptide affinity purification.
Conjugation:	Unconjugated
Storage:	Store at -20°C as received.
Stability:	Stable for 12 months from date of receipt.
Predicted Protein Size:	48535 Da
Gene Name:	ornithine aminotransferase
Database Link:	NP_000265 Entrez Gene 18242 Mouse Entrez Gene 64313 Rat Entrez Gene 4942 Human P04181
Synonyms:	GACR; HOGA; OATASE; OKT
Protein Families:	Druggable Genome
Protein Pathways:	Arginine and proline metabolism, Metabolic pathways



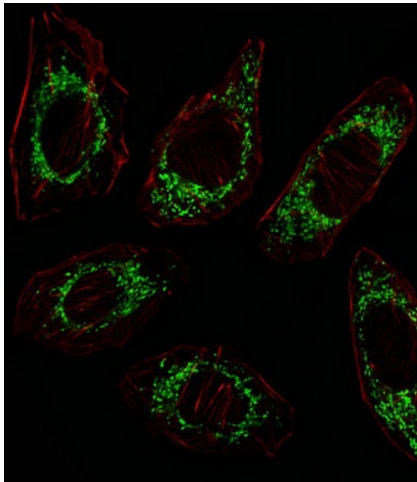
[View online »](#)

Product images:

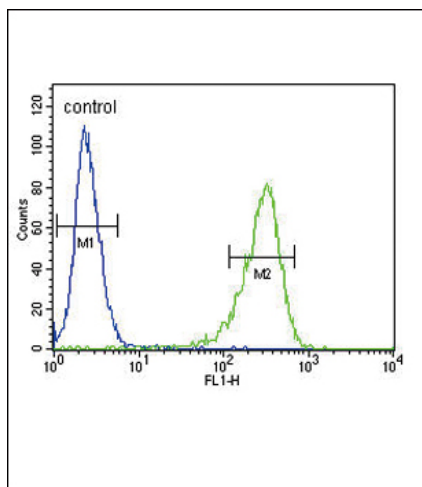
OAT Antibody (N-term) (Cat. #TA325081) western blot analysis in 293, 293T cell line, mouse liver and rat liver tissue lysates (35ug/lane). This demonstrates the OAT antibody detected the OAT protein (arrow).



Formalin-fixed and paraffin-embedded human brain tissue reacted with OAT Antibody (N-term), which was peroxidase-conjugated to the secondary antibody, followed by DAB staining. This data demonstrates the use of this antibody for immunohistochemistry; clinical relevance has not been evaluated.



IF image of A549 cell stained with OAT Antibody (N-term) (Cat#TA325081/SA100310AG). A549 cells were incubated with OAT primary antibody (1:25, 1 h at 37°C). For secondary antibody, Alexa Fluor® 488 conjugated donkey anti-rabbit antibody (green) was used (1:400). Cytoplasmic actin was counterstained with Alexa Fluor® 555 (red) conjugated Phalloidin (7 units/ml). OAT immunoreactivity is localized to Mitochondrion significantly.



OAT Antibody (N-term) (Cat. #TA325081) flow cytometric analysis of 293 cells (right histogram) compared to a negative control cell (left histogram). FITC-conjugated goat-anti-rabbit secondary antibodies were used for the analysis.