

Product datasheet for **TA325080S**

C1QB Rabbit Polyclonal Antibody

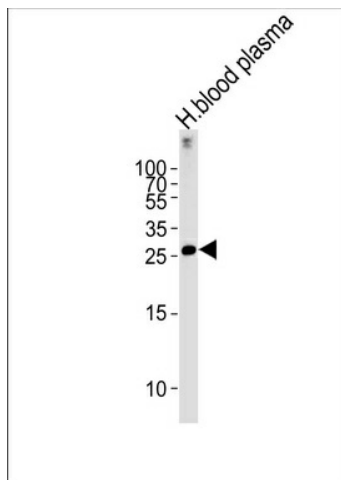
Product data:

Product Type:	Primary Antibodies
Applications:	FC, WB
Recommended Dilution:	WB: 1:1000, FC: 1:10~50
Reactivity:	Human
Host:	Rabbit
Isotype:	IgG
Clonality:	Polyclonal
Immunogen:	This C1QB antibody is generated from rabbits immunized with a KLH conjugated synthetic peptide between 55-81 amino acids from the N-terminal region of human C1QB.
Formulation:	Purified polyclonal antibody supplied in PBS with 0.09% (W/V) sodium azide.
Concentration:	lot specific
Purification:	This antibody is purified through a protein A column, followed by peptide affinity purification.
Conjugation:	Unconjugated
Storage:	Store at -20°C as received.
Stability:	Stable for 12 months from date of receipt.
Predicted Protein Size:	26722 Da
Gene Name:	complement component 1, q subcomponent, B chain
Database Link:	NP_000482 Entrez Gene 713 Human P02746
Synonyms:	B chain; beta polypeptide; complement component 1; complement component C1q; complement subcomponent C1q chain B; OTTHUMP00000002940; q subcomponent
Protein Families:	Secreted Protein
Protein Pathways:	Complement and coagulation cascades, Prion diseases, Systemic lupus erythematosus

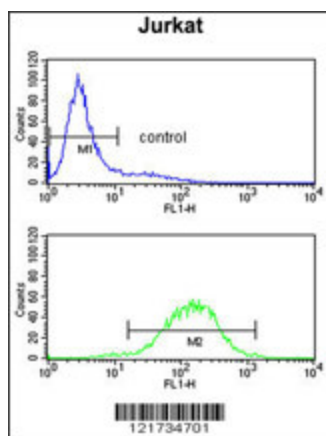


[View online »](#)

Product images:



C1QB Antibody (N-term) (Cat.# [TA325080]) western blot analysis in human blood plasma tissue lysates (35ug/lane). This demonstrates the C1QB antibody detected the C1QB protein (arrow).



C1QB Antibody (N-term) (Cat.# [TA325080]) flow cytometry analysis of Jurkat cells (bottom histogram) compared to a negative control cell (top histogram). FITC-conjugated goat-anti-rabbit secondary antibodies were used for the analysis.