

## Product datasheet for **TA325079**

### p73 (TP73) Rabbit Polyclonal Antibody

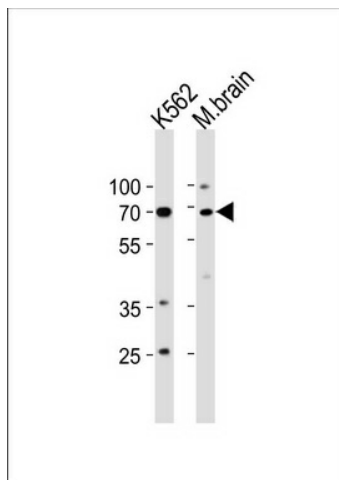
#### Product data:

|                         |   |
|-------------------------|---|
| Product Type:           | Primary Antibodies  |
| Applications:           | FC, IF, IHC, WB   |
| Recommended Dilution:   | WB: 1:1000, IHC: 1:50~100, FC: 1:10~50, IF: 1:10~50   |
| Reactivity:             | Human, Mouse  |
| Host:                   | Rabbit  |
| Isotype:                | IgG   |
| Clonality:              | Polyclonal  |
| Immunogen:              | This TP73 antibody is generated from rabbits immunized with a KLH conjugated synthetic peptide between 288-317 amino acids from the Central region of human TP73. |
| Formulation:            | Purified polyclonal antibody supplied in PBS with 0.09% (W/V) sodium azide.   |
| Concentration:          | lot specific  |
| Purification:           | This antibody is purified through a protein A column, followed by peptide affinity purification.  |
| Conjugation:            | Unconjugated  |
| Storage:                | Store at -20°C as received.   |
| Stability:              | Stable for 12 months from date of receipt.  |
| Predicted Protein Size: | 69623 Da  |
| Gene Name:              | tumor protein p73   |
| Database Link:          | <a href="#">NP_005418</a><br><a href="#">Entrez Gene 7161 Human</a><br><a href="#">Q15350</a>   |
| Synonyms:               | P73   |
| Protein Families:       | Druggable Genome, Transcription Factors   |
| Protein Pathways:       | Neurotrophin signaling pathway, p53 signaling pathway   |

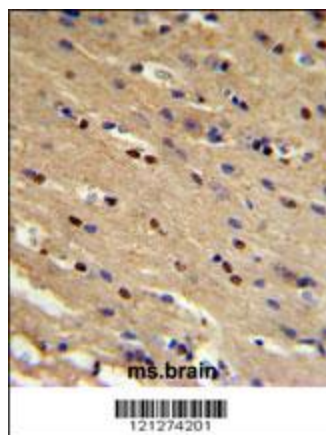


[View online »](#)

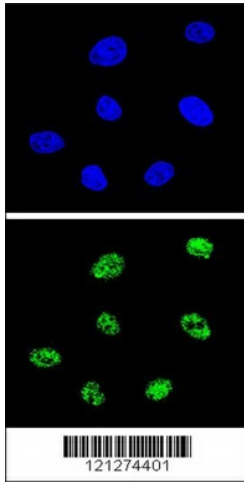
## Product images:



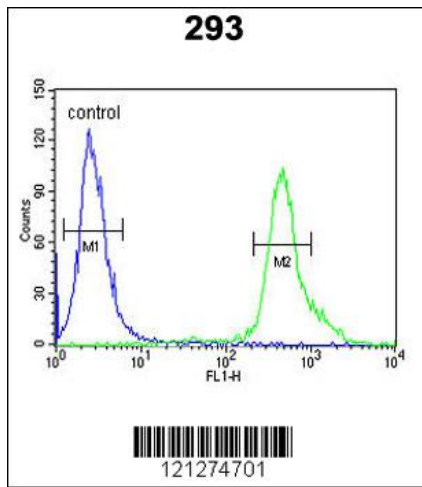
TP73 Antibody (Center) (Cat. #TA325079) western blot analysis in K562 cell line and mouse brain tissue lysates (35ug/lane). This demonstrates the TP73 antibody detected the TP73 protein (arrow).



TP73 Antibody (Center) (Cat. #TA325079) IHC analysis in formalin fixed and paraffin embedded mouse brain followed by peroxidase conjugation of the secondary antibody and DAB staining. This data demonstrates the use of the TP73 Antibody (Center) for immunohistochemistry. Clinical relevance has not been evaluated.



Confocal immunofluorescent analysis of TP73 Antibody (Center) (Cat. #TA325079) with 293 cell followed by Alexa Fluor 488-conjugated goat anti-rabbit IgG (green). DAPI was used to stain the cell nuclear (blue).



TP73 Antibody (Center) (Cat. #TA325079) flow cytometric analysis of 293 cells (right histogram) compared to a negative control cell (left histogram). FITC-conjugated goat-anti-rabbit secondary antibodies were used for the analysis.