

Product datasheet for **TA325078S**

12 Lipoygenase (ALOX12) Rabbit Polyclonal Antibody

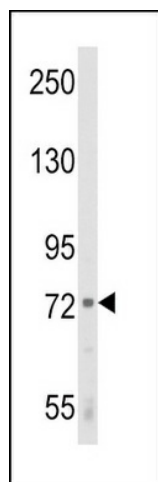
Product data:

Product Type:	Primary Antibodies
Applications:	FC, IF, IHC, WB
Recommended Dilution:	IF: 1:100, WB: 1:1000, IHC: 1:10~50, FC: 1:10~50
Reactivity:	Human
Host:	Rabbit
Isotype:	IgG
Clonality:	Polyclonal
Immunogen:	This ALOX12 antibody is generated from rabbits immunized with a KLH conjugated synthetic peptide between 618-650 amino acids from the C-terminal region of human ALOX12.
Formulation:	Purified polyclonal antibody supplied in PBS with 0.09% (W/V) sodium azide.
Concentration:	lot specific
Purification:	This antibody is prepared by Saturated Ammonium Sulfate (SAS) precipitation followed by dialysis against PBS.
Conjugation:	Unconjugated
Storage:	Store at -20°C as received.
Stability:	Stable for 12 months from date of receipt.
Predicted Protein Size:	75694 Da
Gene Name:	arachidonate 12-lipoxygenase, 12S type
Database Link:	NP_000688 Entrez Gene 239 Human P18054
Synonyms:	12-LOX; 12S-LOX; LOG12
Protein Families:	Druggable Genome
Protein Pathways:	Arachidonic acid metabolism, Metabolic pathways

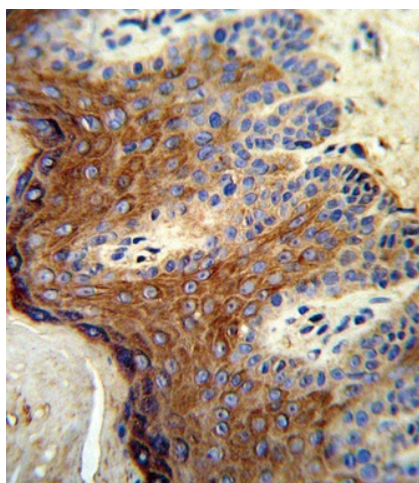


[View online »](#)

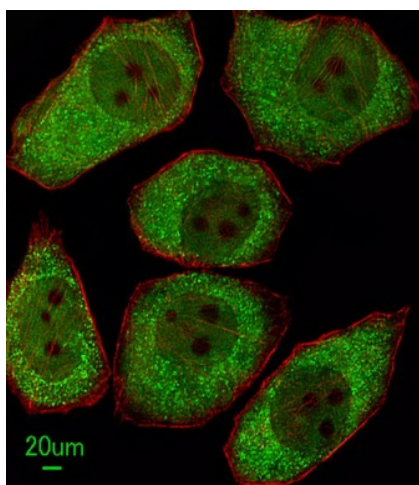
Product images:



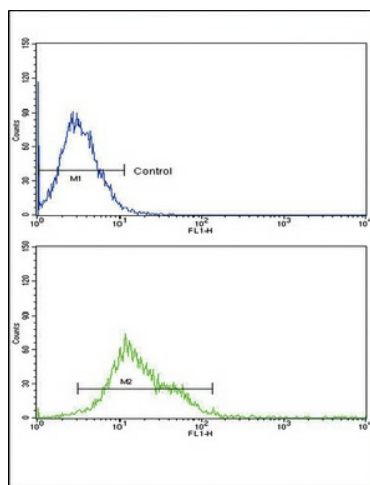
Western blot analysis of ALOX12 Antibody (C-term) (Cat. #TA325078) in K562 cell line lysates (35ug/lane). ALOX12 (arrow) was detected using the purified Pab.



Formalin-fixed and paraffin-embedded human skin tissue reacted with ALOX12 Antibody (C-term), which was peroxidase-conjugated to the secondary antibody, followed by DAB staining. This data demonstrates the use of this antibody for immunohistochemistry; clinical relevance has not been evaluated.



Immunofluorescent analysis of A549 cells, using ALOX12 Antibody (C-term) (Cat. #[TA325078]). [TA325078] was diluted at 1Å⁻¹100 dilution. Alexa Fluor 488-conjugated goat anti-rabbit IgG at 1:400 dilution was used as the secondary antibody (green). Cytoplasmic actin was counterstained with Dylight Fluor® 554 (red) conjugated Phalloidin (red).



ALOX12 Antibody (C-term) (Cat. #[TA325078]) flow cytometric analysis of k562 cells (bottom histogram) compared to a negative control cell (top histogram). FITC-conjugated goat-anti-rabbit secondary antibodies were used for the analysis.