

Product datasheet for **TA325077**

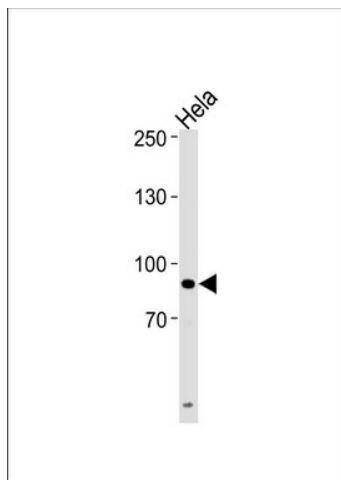
UHRF1 Rabbit Polyclonal Antibody

Product data:

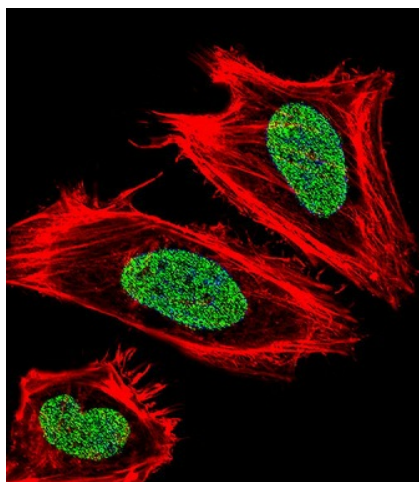
Product Type:	Primary Antibodies
Applications:	FC, IF, WB
Recommended Dilution:	WB: 1:1000, FC: 1:10~50, IF: 1:10~50
Reactivity:	Human
Host:	Rabbit
Isotype:	IgG
Clonality:	Polyclonal
Immunogen:	This UHRF1 antibody is generated from rabbits immunized with a KLH conjugated synthetic peptide between 229-257 amino acids from the Central region of human UHRF1.
Formulation:	Purified polyclonal antibody supplied in PBS with 0.09% (W/V) sodium azide.
Concentration:	lot specific
Purification:	This antibody is purified through a protein A column, followed by peptide affinity purification.
Conjugation:	Unconjugated
Storage:	Store at -20°C as received.
Stability:	Stable for 12 months from date of receipt.
Predicted Protein Size:	89814 Da
Gene Name:	ubiquitin like with PHD and ring finger domains 1
Database Link:	NP_001041666 Entrez Gene 29128 Human Q96T88
Synonyms:	hNP95; hUHRF1; huNp95; ICBP90; Np95; RNF106
Protein Families:	Druggable Genome, Transcription Factors



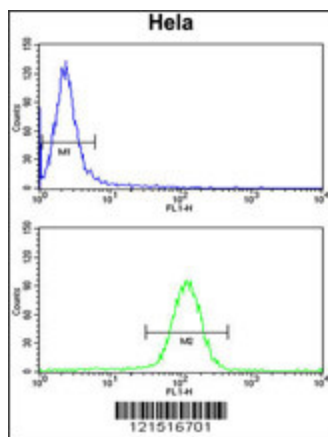
[View online »](#)

Product images:

UHRF1 Antibody (Center) (Cat. #TA325077) western blot analysis in HeLa cell line lysates (35ug/lane). This demonstrates the UHRF1 antibody detected the UHRF1 protein (arrow).



IF image of HeLa cell stained with UHRF1 Antibody (Center) (Cat#TA325077). HeLa cells were incubated with UHRF1 primary antibody (1:25, 1 h at 37°C). For secondary antibody, Alexa Fluor® 488 conjugated donkey anti-rabbit antibody (green) was used (1:400). Cytoplasmic actin was counterstained with Alexa Fluor® 555 (red) conjugated Phalloidin (7 units/ml). Nuclei were counterstained with DAPI (blue). UHRF1 immunoreactivity is localized to Nucleus significantly.



UHRF1 Antibody (Center) (Cat.#TA325077) flow cytometry analysis of HeLa cells (bottom histogram) compared to a negative control cell (top histogram). FITC-conjugated goat-anti-rabbit secondary antibodies were used for the analysis.