

## Product datasheet for **TA325076**

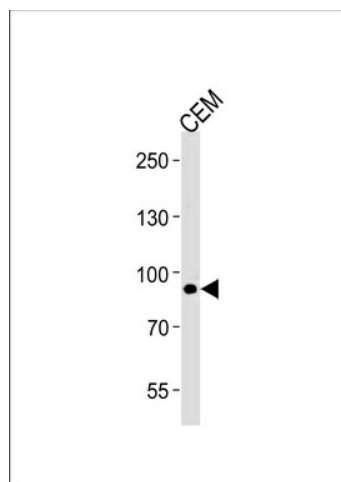
### Matrilin 2 (MATN2) Rabbit Polyclonal Antibody

#### Product data:

Product Type:	Primary Antibodies
Applications:	WB
Recommended Dilution:	WB: 1:1000
Reactivity:	Human
Host:	Rabbit
Isotype:	IgG
Clonality:	Polyclonal
Immunogen:	This MATN2 antibody is generated from rabbits immunized with a KLH conjugated synthetic peptide between 732-760 amino acids from the C-terminal region of human MATN2.
Formulation:	Purified polyclonal antibody supplied in PBS with 0.09% (W/V) sodium azide.
Concentration:	lot specific
Purification:	This antibody is purified through a protein A column, followed by peptide affinity purification.
Conjugation:	Unconjugated
Storage:	Store at -20°C as received.
Stability:	Stable for 12 months from date of receipt.
Predicted Protein Size:	106837 Da
Gene Name:	matrilin 2
Database Link:	<a href="#">NP_002371</a> <a href="#">Entrez Gene 4147 Human</a> <a href="#">O00339</a>
Synonyms:	matrilin 2; PRO219
Protein Families:	Secreted Protein



[View online »](#)

**Product images:**

MATN2 Antibody (C-term) (Cat. #TA325076) western blot analysis in CEM cell line lysates (35ug/lane). This demonstrates the MATN2 antibody detected the MATN2 protein (arrow).