

## Product datasheet for **TA325075**

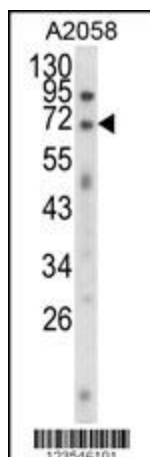
### **EWSR1 Rabbit Polyclonal Antibody**

#### **Product data:**

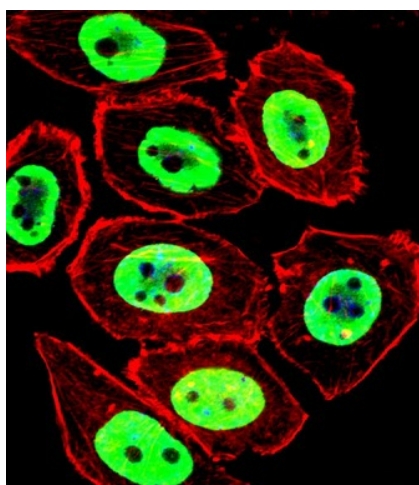
<b>Product Type:</b>	Primary Antibodies
<b>Applications:</b>	FC, IF, WB
<b>Recommended Dilution:</b>	IF: 1:10~50, WB: 1:1000, FC: 1:10~50
<b>Reactivity:</b>	Human (Predicted: Mouse)
<b>Host:</b>	Rabbit
<b>Isotype:</b>	IgG
<b>Clonality:</b>	Polyclonal
<b>Immunogen:</b>	This EWSR1 antibody is generated from rabbits immunized with a KLH conjugated synthetic peptide between 628-656 amino acids from the C-terminal region of human EWSR1.
<b>Formulation:</b>	Purified polyclonal antibody supplied in PBS with 0.09% (W/V) sodium azide.
<b>Concentration:</b>	lot specific
<b>Purification:</b>	This antibody is purified through a protein A column, followed by peptide affinity purification.
<b>Conjugation:</b>	Unconjugated
<b>Storage:</b>	Store at -20°C as received.
<b>Stability:</b>	Stable for 12 months from date of receipt.
<b>Predicted Protein Size:</b>	68478 Da
<b>Gene Name:</b>	EWS RNA binding protein 1
<b>Database Link:</b>	<a href="#">NP_053733</a> <a href="#">Entrez Gene 14030 Mouse</a> <a href="#">Entrez Gene 2130 Human</a> <a href="#">Q01844</a>
<b>Synonyms:</b>	bK984G1.4; EWS; EWS-FLI1
<b>Protein Families:</b>	Druggable Genome, Stem cell - Pluripotency, Transcription Factors



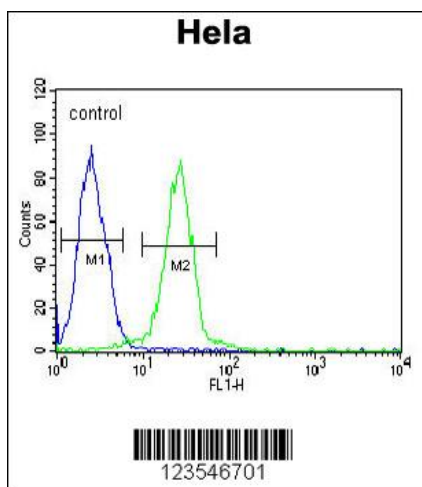
[View online »](#)

**Product images:**

Western blot analysis of EWSR1 Antibody (C-term) (Cat. #TA325075) in A2058 cell line lysates (35ug/lane). EWSR1 (arrow) was detected using the purified Pab.



IF image of U251 cell stained with EWSR1 Antibody (C-term) (Cat#TA325075).U251 cells were incubated with EWSR1 primary antibody (1:25, 1 h at 37°C). For secondary antibody, Alexa Fluor® 488 conjugated donkey anti-rabbit antibody (green) was used (1:400).Cytoplasmic actin was counterstained with Alexa Fluor® 555 (red) conjugated Phalloidin (7 units/ml). Nuclei were counterstained with DAPI (blue).EWSR1 immunoreactivity is localized to Nucleus significantly.



EWSR1 Antibody (C-term) (Cat. #TA325075) flow cytometric analysis of HeLa cells (right histogram) compared to a negative control cell (left histogram). FITC-conjugated goat-anti-rabbit secondary antibodies were used for the analysis.