

## Product datasheet for **TA325073**

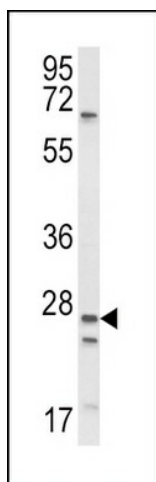
### epithelial Sodium Channel alpha (SCNN1A) Rabbit Polyclonal Antibody

#### Product data:

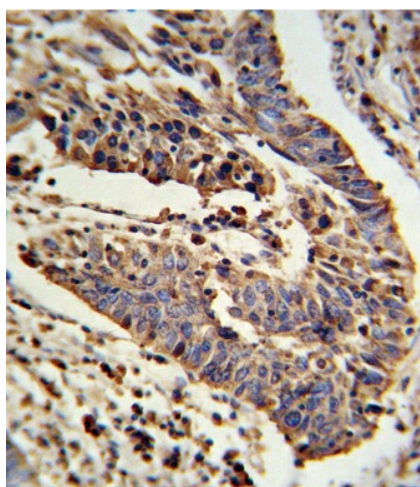
Product Type:	Primary Antibodies
Applications:	FC, IF, IHC, WB
Recommended Dilution:	WB: 1:1000, IHC: 1:10~50, IF: 1:10~50, FC: 1:10~50
Reactivity:	Human
Host:	Rabbit
Isotype:	IgG
Clonality:	Polyclonal
Immunogen:	This SCNN1A antibody is generated from rabbits immunized with a KLH conjugated synthetic peptide between 365-391 amino acids from the Central region of human SCNN1A.
Formulation:	Purified polyclonal antibody supplied in PBS with 0.09% (W/V) sodium azide.
Concentration:	lot specific
Purification:	This antibody is purified through a protein A column, followed by peptide affinity purification.
Conjugation:	Unconjugated
Storage:	Store at -20°C as received.
Stability:	Stable for 12 months from date of receipt.
Predicted Protein Size:	75704 Da
Gene Name:	sodium channel epithelial 1 alpha subunit
Database Link:	<a href="#">NP_001029</a> <a href="#">Entrez Gene 6337 Human</a> <a href="#">P37088</a>
Synonyms:	BESC2; ENaCa; ENaCalpha; SCNEA; SCNN1
Protein Families:	Druggable Genome, Ion Channels: Other, Transmembrane
Protein Pathways:	Taste transduction



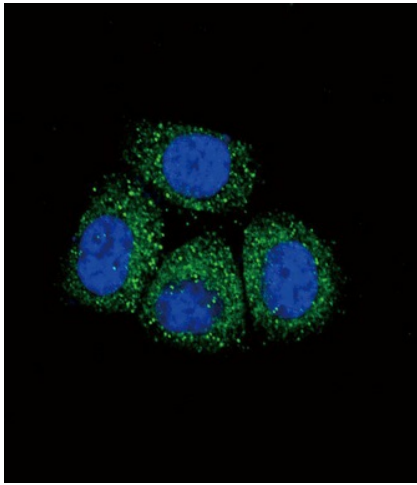
[View online »](#)

**Product images:**

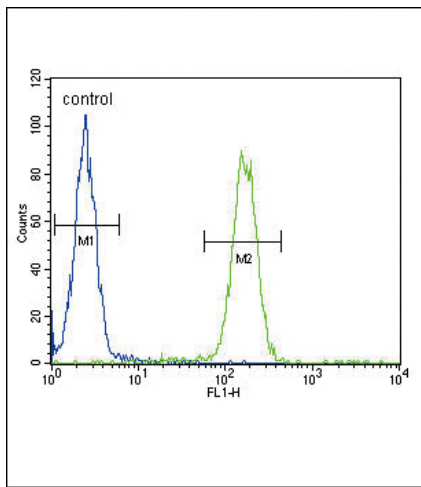
Western blot analysis of SCNN1A Antibody (Center) (Cat. #TA325073) in WiDr cell line lysates (35ug/lane). SCNN1A (arrow) was detected using the purified Pab.



Formalin-fixed and paraffin-embedded human lung carcinoma reacted with SCNN1A Antibody (Center), which was peroxidase-conjugated to the secondary antibody, followed by DAB staining. This data demonstrates the use of this antibody for immunohistochemistry; clinical relevance has not been evaluated.



Confocal immunofluorescent analysis of SCNN1A Antibody (Center) (Cat. #TA325073) with Hela cell followed by Alexa Fluor 488-conjugated goat anti-rabbit IgG (green). DAPI was used to stain the cell nuclear (blue).



SCNN1A Antibody (Center) (Cat. #TA325073) flow cytometric analysis of WiDr cells (right histogram) compared to a negative control cell (left histogram). FITC-conjugated goat-anti-rabbit secondary antibodies were used for the analysis.