

Product datasheet for **TA325072**

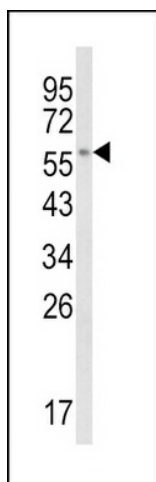
CYP8B1 Rabbit Polyclonal Antibody

Product data:

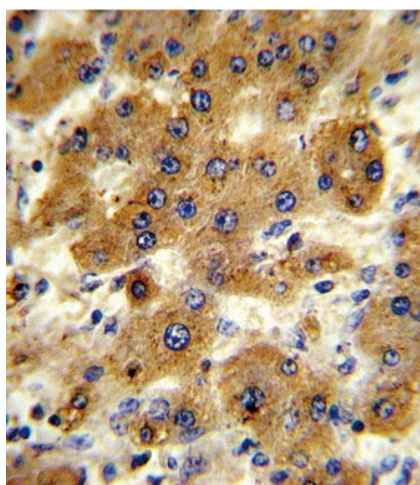
Product Type:	Primary Antibodies
Applications:	FC, IHC, WB
Recommended Dilution:	WB: 1:1000, IHC: 1:10~50, FC: 1:10~50
Reactivity:	Human
Host:	Rabbit
Isotype:	IgG
Clonality:	Polyclonal
Immunogen:	This CYP8B1 antibody is generated from rabbits immunized with a KLH conjugated synthetic peptide between 471-501 amino acids from the C-terminal region of human CYP8B1.
Formulation:	Purified polyclonal antibody supplied in PBS with 0.09% (W/V) sodium azide.
Concentration:	lot specific
Purification:	This antibody is prepared by Saturated Ammonium Sulfate (SAS) precipitation followed by dialysis against PBS.
Conjugation:	Unconjugated
Storage:	Store at -20°C as received.
Stability:	Stable for 12 months from date of receipt.
Predicted Protein Size:	58068 Da
Gene Name:	cytochrome P450 family 8 subfamily B member 1
Database Link:	NP_004382 Entrez Gene 1582 Human Q9UNU6
Synonyms:	CP8B; CYP12
Protein Families:	Druggable Genome, P450, Transmembrane
Protein Pathways:	Metabolic pathways, PPAR signaling pathway, Primary bile acid biosynthesis



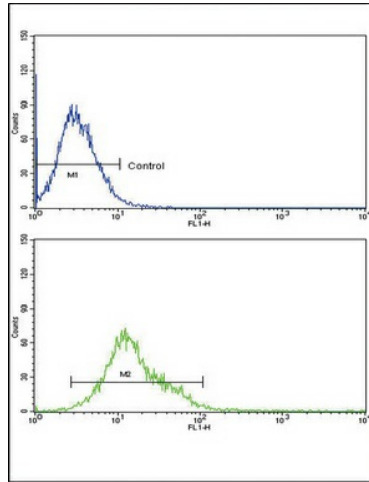
[View online »](#)

Product images:

Western blot analysis of CYP8B1 Antibody (C-term) (Cat. #TA325072) in K562 cell line lysates (35ug/lane). CYP8B1 (arrow) was detected using the purified Pab.



Formalin-fixed and paraffin-embedded human hepatocarcinoma reacted with CYP8B1 Antibody (C-term), which was peroxidase-conjugated to the secondary antibody, followed by DAB staining. This data demonstrates the use of this antibody for immunohistochemistry; clinical relevance has not been evaluated.



CYP8B1 Antibody (C-term) (Cat. #TA325072) flow cytometric analysis of k562 cells (bottom histogram) compared to a negative control cell (top histogram). FITC-conjugated goat-anti-rabbit secondary antibodies were used for the analysis.