

Product datasheet for **TA325071**

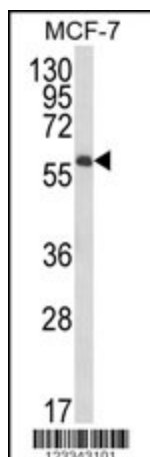
IL10RA Rabbit Polyclonal Antibody

Product data:

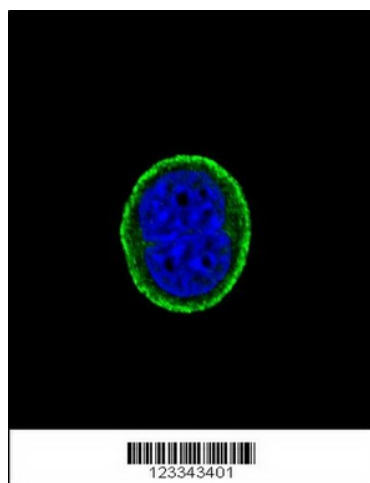
| | |
|-------------------------|---|
| Product Type: | Primary Antibodies |
| Applications: | FC, IF, WB |
| Recommended Dilution: | WB: 1:1000, FC: 1:10~50, IF: 1:10~50 |
| Reactivity: | Human |
| Host: | Rabbit |
| Isotype: | IgG |
| Clonality: | Polyclonal |
| Immunogen: | This IL10RA antibody is generated from rabbits immunized with a KLH conjugated synthetic peptide between 147-175 amino acids from the Central region of human IL10RA. |
| Formulation: | Purified polyclonal antibody supplied in PBS with 0.09% (W/V) sodium azide. |
| Concentration: | lot specific |
| Purification: | This antibody is purified through a protein A column, followed by peptide affinity purification. |
| Conjugation: | Unconjugated |
| Storage: | Store at -20°C as received. |
| Stability: | Stable for 12 months from date of receipt. |
| Predicted Protein Size: | 63003 Da |
| Gene Name: | interleukin 10 receptor subunit alpha |
| Database Link: | NP_001549 Entrez Gene 3587 Human Q13651 |
| Synonyms: | CD210; CD210a; CDW210A; HIL-10R; IL-10R1; IL10R |
| Protein Families: | Druggable Genome, Transmembrane |
| Protein Pathways: | Cytokine-cytokine receptor interaction, Jak-STAT signaling pathway |



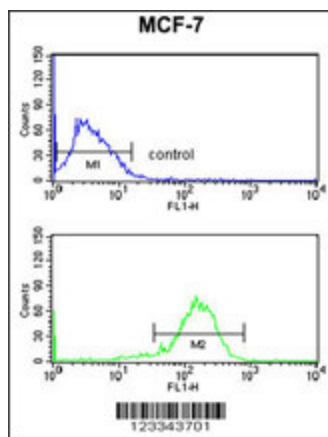
[View online »](#)

Product images:

Western blot analysis of IL10RA Antibody (Center) (Cat. #TA325071) in MCF-7 cell line lysates (35ug/lane). IL10RA (arrow) was detected using the purified Pab.



Confocal immunofluorescent analysis of IL10RA Antibody (Center) (Cat#TA325071) with MCF-7 cell followed by Alexa Fluor® 488-conjugated goat anti-rabbit IgG (green). DAPI was used to stain the cell nuclear (blue).



IL10RA Antibody (Center) (Cat. #TA325071) flow cytometry analysis of MCF-7 cells (bottom histogram) compared to a negative control cell (top histogram). FITC-conjugated goat-anti-rabbit secondary antibodies were used for the analysis.