

## Product datasheet for **TA325069S**

### **BMI1 Rabbit Polyclonal Antibody**

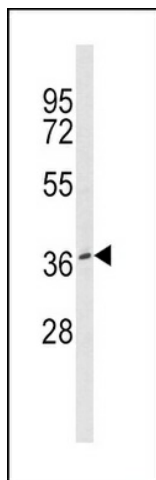
#### **Product data:**

Product Type:	Primary Antibodies
Applications:	FC, IF, IHC, WB
Recommended Dilution:	WB: 1:1000, IHC: 1:10~50, IF: 1:10~50, FC: 1:10~50
Reactivity:	Human
Host:	Rabbit
Isotype:	IgG
Clonality:	Polyclonal
Immunogen:	This BMI1 antibody is generated from rabbits immunized with BMI1 recombinant protein.
Formulation:	Purified polyclonal antibody supplied in PBS with 0.09% (W/V) sodium azide.
Concentration:	lot specific
Purification:	This antibody is purified through a protein A column, followed by peptide affinity purification.
Conjugation:	Unconjugated
Storage:	Store at -20°C as received.
Stability:	Stable for 12 months from date of receipt.
Predicted Protein Size:	36949 Da
Gene Name:	BMI1 proto-oncogene, polycomb ring finger
Database Link:	<a href="#">NP_005171</a> <a href="#">Entrez Gene 648 Human</a> <a href="#">P35226</a>
Synonyms:	BMI1; FLVI2; PCGF4; RNF51
Protein Families:	Druggable Genome, ES Cell Differentiation/IPS, Transcription Factors

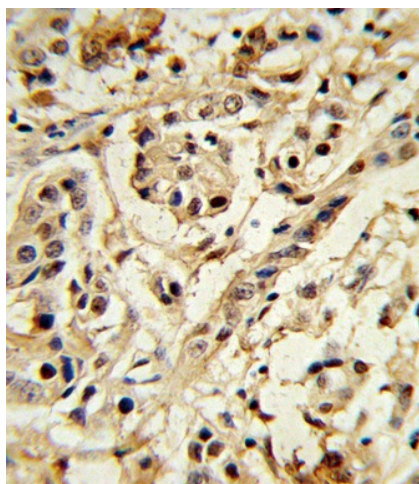


[View online »](#)

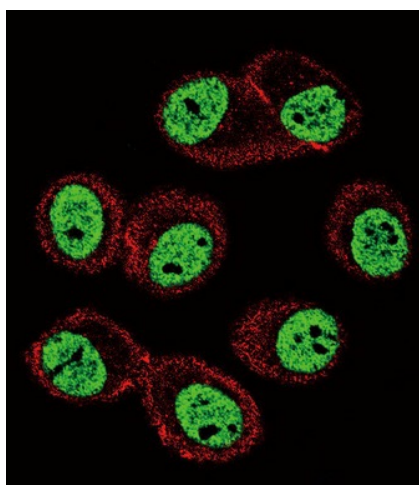
## Product images:



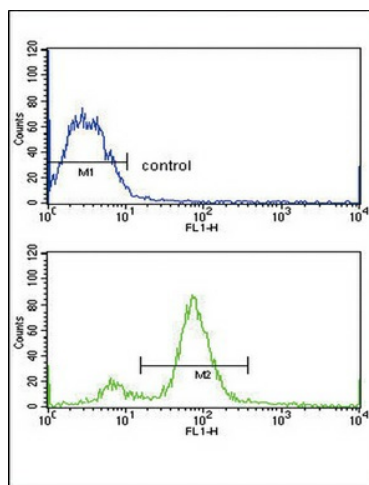
Western blot analysis of BMI1 Antibody (Cat. # [TA325069]) in MCF7 cell line lysates (35ug/lane). BMI1 (arrow) was detected using the purified Pab.



Formalin-fixed and paraffin-embedded human breast carcinoma reacted with BMI1 Antibody, which was peroxidase-conjugated to the secondary antibody, followed by DAB staining. This data demonstrates the use of this antibody for immunohistochemistry; clinical relevance has not been evaluated.



Confocal immunofluorescent analysis of BMI1 Antibody (Cat#[TA325069]) with MCF-7 cell followed by Alexa Fluor 488-conjugated goat anti-rabbit IgG (green). Actin filaments have been labeled with Alexa Fluor 555 phalloidin (red).



BMI1 Antibody (Cat. #[TA325069]) flow cytometric analysis of MCF-7 cells (bottom histogram) compared to a negative control cell (top histogram). FITC-conjugated goat-anti-rabbit secondary antibodies were used for the analysis.