

Product datasheet for **TA325068**

Annexin VII (ANXA7) Rabbit Polyclonal Antibody

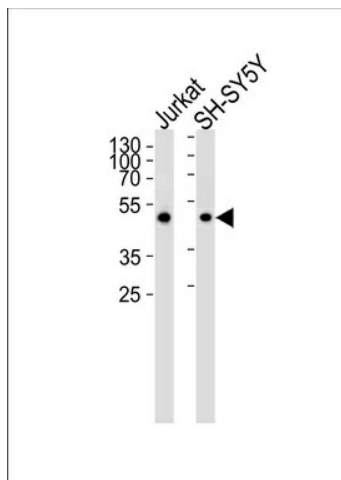
Product data:

Product Type:	Primary Antibodies
Applications:	FC, IHC, WB
Recommended Dilution:	WB: 1:1000, IHC: 1:50~100, FC: 1:10~50
Reactivity:	Human (Predicted: Mouse, Bovine, Monkey)
Host:	Rabbit
Isotype:	IgG
Clonality:	Polyclonal
Immunogen:	This ANXA7 antibody is generated from rabbits immunized with a KLH conjugated synthetic peptide between 329-356 amino acids from the Central region of human ANXA7.
Formulation:	Purified polyclonal antibody supplied in PBS with 0.09% (W/V) sodium azide.
Concentration:	lot specific
Purification:	This antibody is purified through a protein A column, followed by peptide affinity purification.
Conjugation:	Unconjugated
Storage:	Store at -20°C as received.
Stability:	Stable for 12 months from date of receipt.
Predicted Protein Size:	52739 Da
Gene Name:	annexin A7
Database Link:	NP_001147 Entrez Gene 11750 Mouse Entrez Gene 707166 Monkey Entrez Gene 310 Human P20073
Synonyms:	ANX7; SNX; SYNEXIN

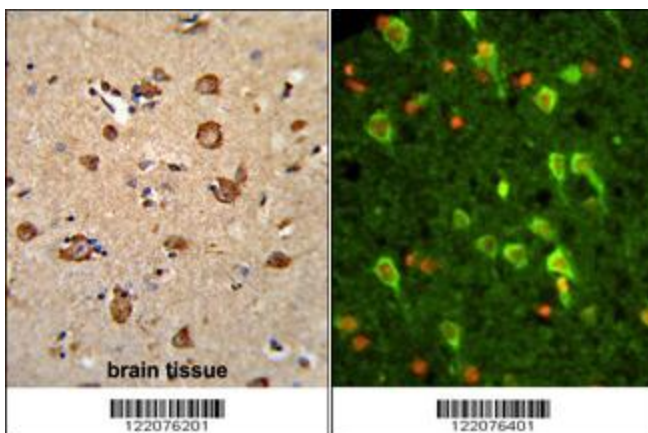


[View online »](#)

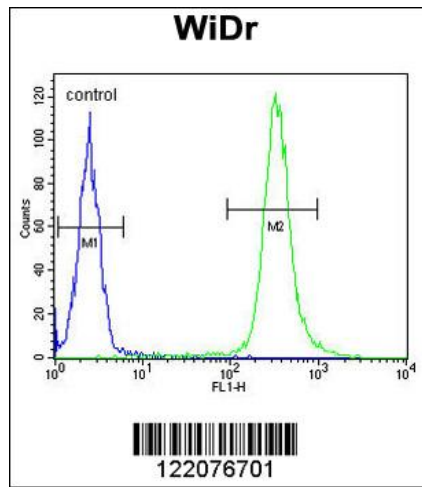
Product images:



ANXA7 Antibody (Center) (Cat.# TA325068) western blot analysis in Jurkat and SH-SY5Y cell lysates (35ug/lane). This demonstrates that the ANXA7 antibody detected ANXA7 protein (arrow).



(LEFT) Formalin-fixed and paraffin-embedded human brain tissue reacted with ANXA7 Antibody (Center), which was peroxidase-conjugated to the secondary antibody, followed by DAB staining. (RIGHT) Immunofluorescence analysis of ANXA7 Antibody (Center) with paraffin-embedded human brain tissue. 0.05 mg/ml primary antibody was followed by FITC-conjugated goat anti-rabbit IgG (whole molecule). FITC emits green fluorescence. Red counterstaining is PI.



ANXA7 Antibody (Center) (Cat. #TA325068) flow cytometric analysis of WiDr cells (right histogram) compared to a negative control cell (left histogram). FITC-conjugated goat-anti-rabbit secondary antibodies were used for the analysis.