

Product datasheet for **TA325067**

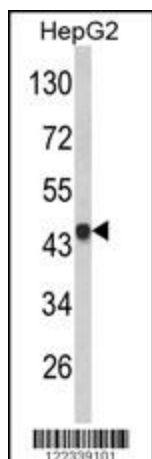
VPS26 (VPS26A) Rabbit Polyclonal Antibody

Product data:

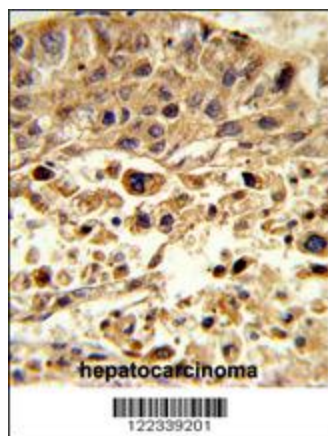
| | |
|-------------------------|---|
| Product Type: | Primary Antibodies |
| Applications: | FC, IHC, WB |
| Recommended Dilution: | WB: 1:1000, IHC: 1:50~100, FC: 1:10~50 |
| Reactivity: | Human (Predicted: Mouse, Rat, Zebrafish, Bovine, Xenopus, C. elegans) |
| Host: | Rabbit |
| Isotype: | IgG |
| Clonality: | Polyclonal |
| Immunogen: | This VPS26A antibody is generated from rabbits immunized with a KLH conjugated synthetic peptide between 263-291 amino acids from the Central region of human VPS26A. |
| Formulation: | Purified polyclonal antibody supplied in PBS with 0.09% (W/V) sodium azide. |
| Concentration: | lot specific |
| Purification: | This antibody is purified through a protein A column, followed by peptide affinity purification. |
| Conjugation: | Unconjugated |
| Storage: | Store at -20°C as received. |
| Stability: | Stable for 12 months from date of receipt. |
| Predicted Protein Size: | 38170 Da |
| Gene Name: | VPS26 retromer complex component A |
| Database Link: | NP_001030337 Entrez Gene 30930 Mouse Entrez Gene 361846 Rat Entrez Gene 9559 Human O75436 |
| Synonyms: | HB58; Hbeta58; PEP8A; VPS26 |



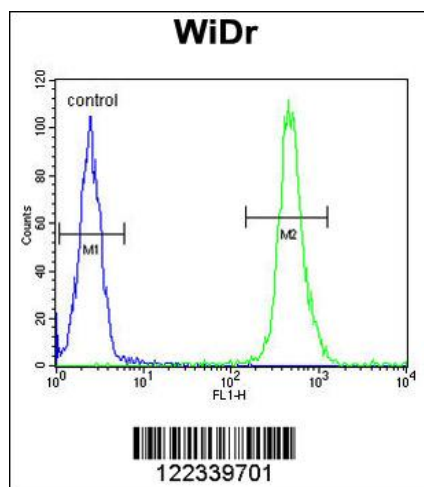
[View online »](#)

Product images:

Western blot analysis of VPS26A Antibody (Center) (Cat. #TA325067) in HepG2 cell line lysates (35ug/lane). VPS26A (arrow) was detected using the purified Pab.



Formalin-fixed and paraffin-embedded human hepatocarcinoma reacted with VPS26A Antibody (Center), which was peroxidase-conjugated to the secondary antibody, followed by DAB staining. This data demonstrates the use of this antibody for immunohistochemistry; clinical relevance has not been evaluated.



VPS26A Antibody (Center) (Cat. #TA325067) flow cytometric analysis of WiDr cells (right histogram) compared to a negative control cell (left histogram). FITC-conjugated goat-anti-rabbit secondary antibodies were used for the analysis.